



CO-FINANCED BY THE EUROPEAN UNION

CONNECTING EUROPE FACILITY

# Vitoria-Júndiz Multimodal Platform

Plan Transforma 2020

Infrastructure Plan to promote  
freight rail transport



16th TAG RAG meeting  
Bilbao Port, March 13th 2019



# Marta Hernanz

Deputy Technical Logistics Services Director



## WHAT WE WILL COVER

---

**1**

**Logistics &  
Transport  
Strategic  
Node**

**2**

**Global &  
Phase 1  
Projects  
View**

**3**

**Development  
Stages &  
Business  
Model**



THIS PROJECT IS CO-FINANCED BY  
CONNECTING EUROPE FACILITY





CO-FINANCED BY THE EUROPEAN UNION

CONNECTING EUROPE FACILITY

# Vitoria: Logistics & Transport Strategic Node



1

2

3



## Vitoria: Logistics & Transport Strategic Node



THIS PROJECT IS CO-FINANCED BY  
CONNECTING EUROPE FACILITY

1

2

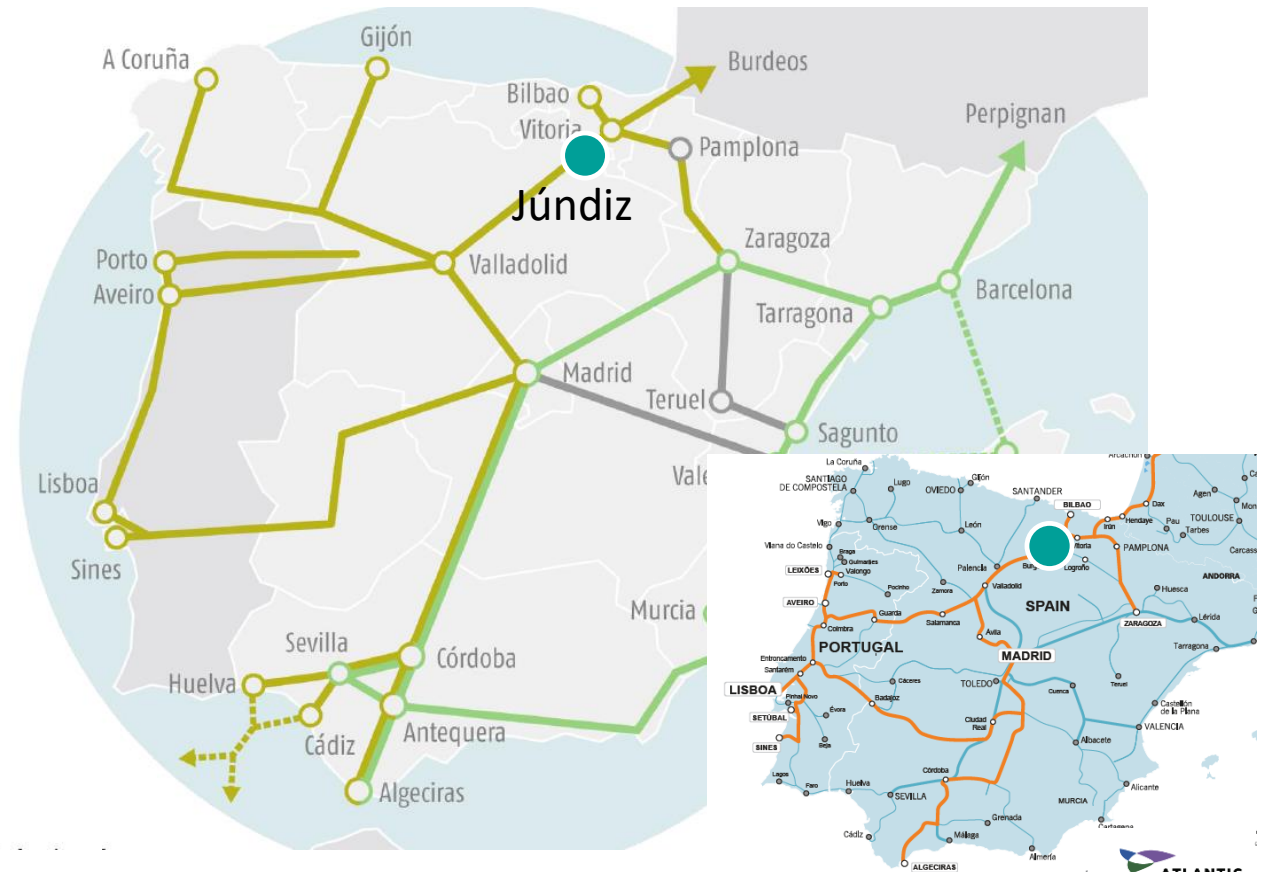
3



# LOGISTICS & TRANSPORT STRATEGIC NODE

## Core Atlantic Corridor Modification Proposal

- **Ten-T Network Node**
- **Atlantic Corridor (RFC) Node**
- Close to **cross-border section**
- **Entrance and exit gate to Europe**
- Connected to **Cantabric-Mediterranean Corridors**
- Connected to **Core Iberian Ports**



THIS PROJECT IS CO-FINANCED BY  
CONNECTING EUROPE FACILITY

1

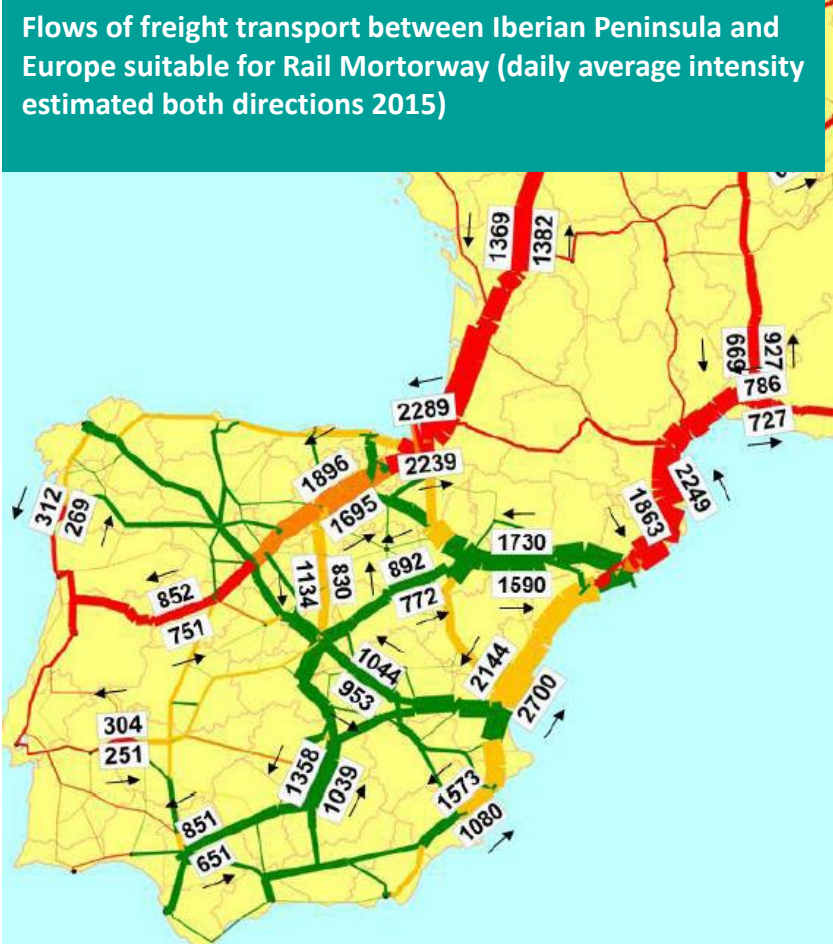
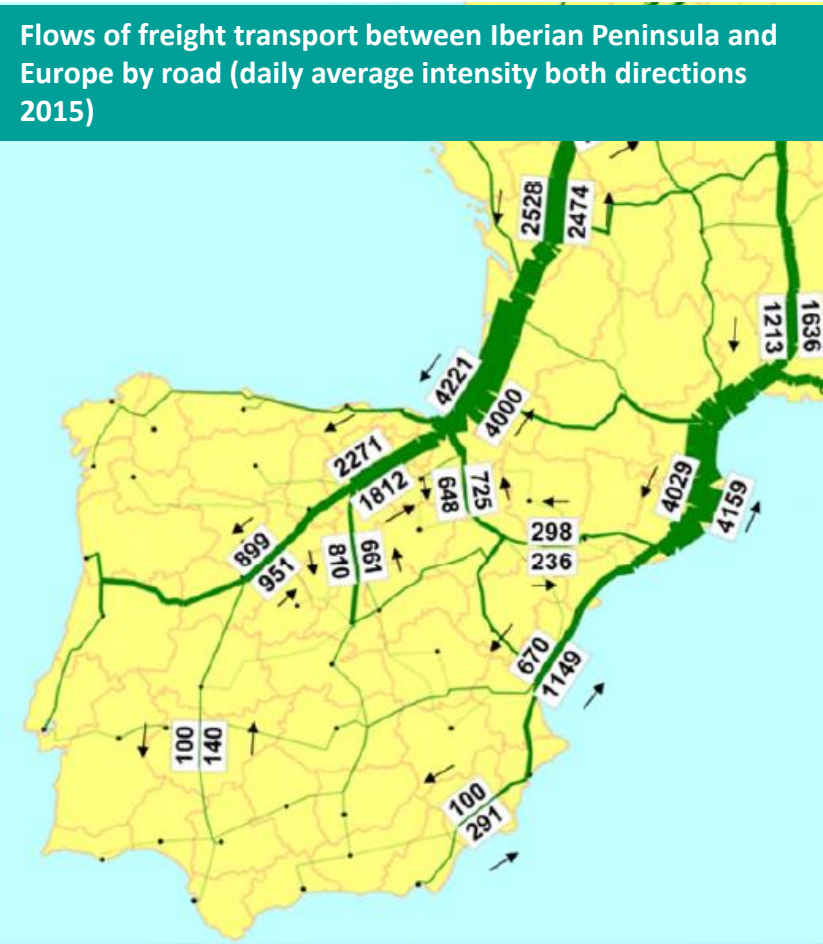
2

3



# LOGISTICS & TRANSPORT STRATEGIC NODE

- In the main flows of goods transiting by road between Iberian peninsula and EU15 countries



Source: Study por the development of a rail motorway transport in the Iberian peninsula. Ministry of Public Works. 2015



THIS PROJECT IS CO-FINANCED BY CONNECTING EUROPE FACILITY

1

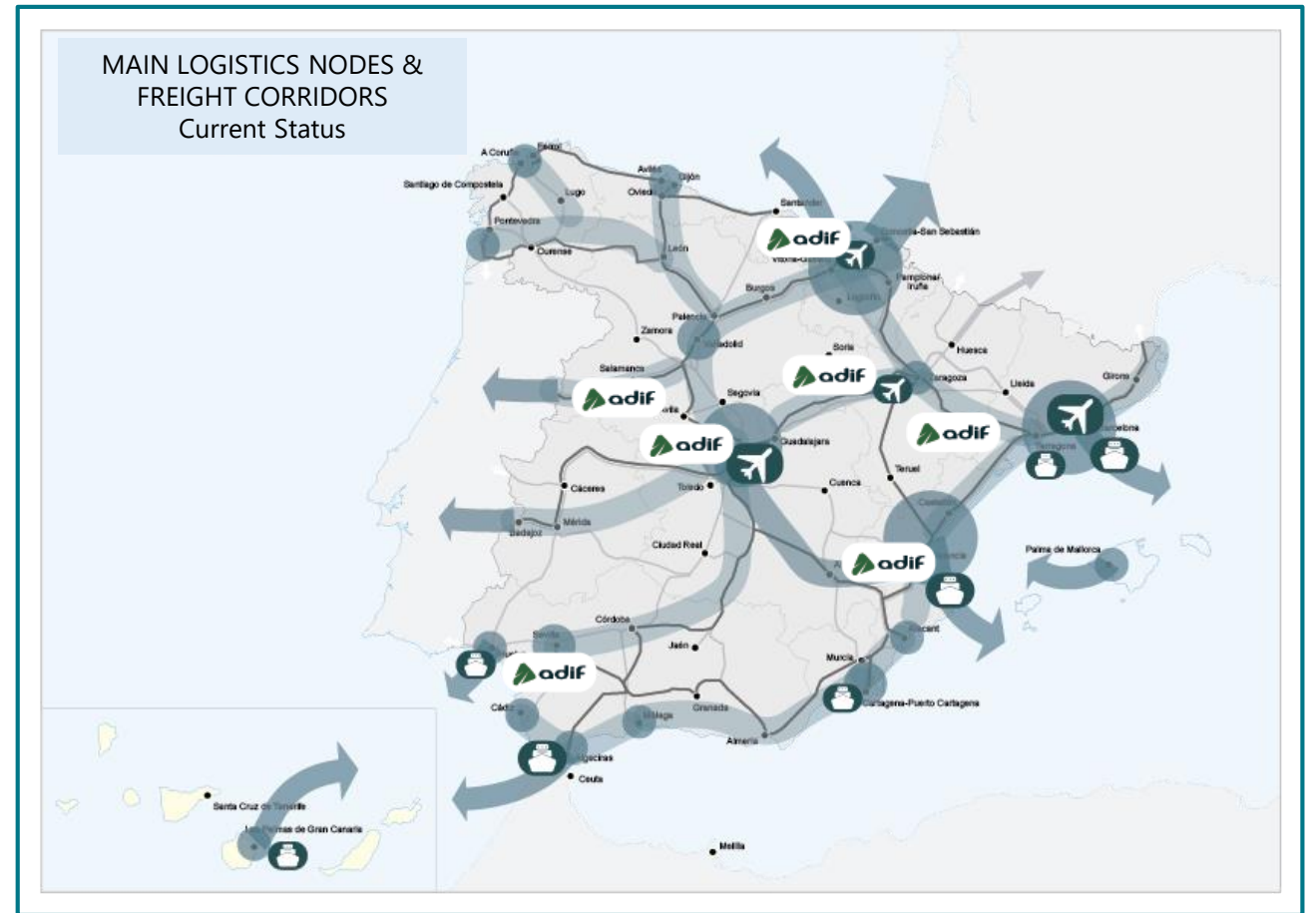
2

3



# LOGISTICS & TRANSPORT STRATEGIC NODE

- Part of Adif's Logistics and Intermodal **Strategic Nodes Network**
- Located in the priority freight corridors and fully integrated in the transport chain
- Promoting **intermodality**
- Progressive and coordinated implementation of **standard gauge** and **740m** long train treatment tracks
- Fostering cooperation between Infrastructure managers, logistics operators, shippers, etc



THIS PROJECT IS CO-FINANCED BY  
CONNECTING EUROPE FACILITY

1

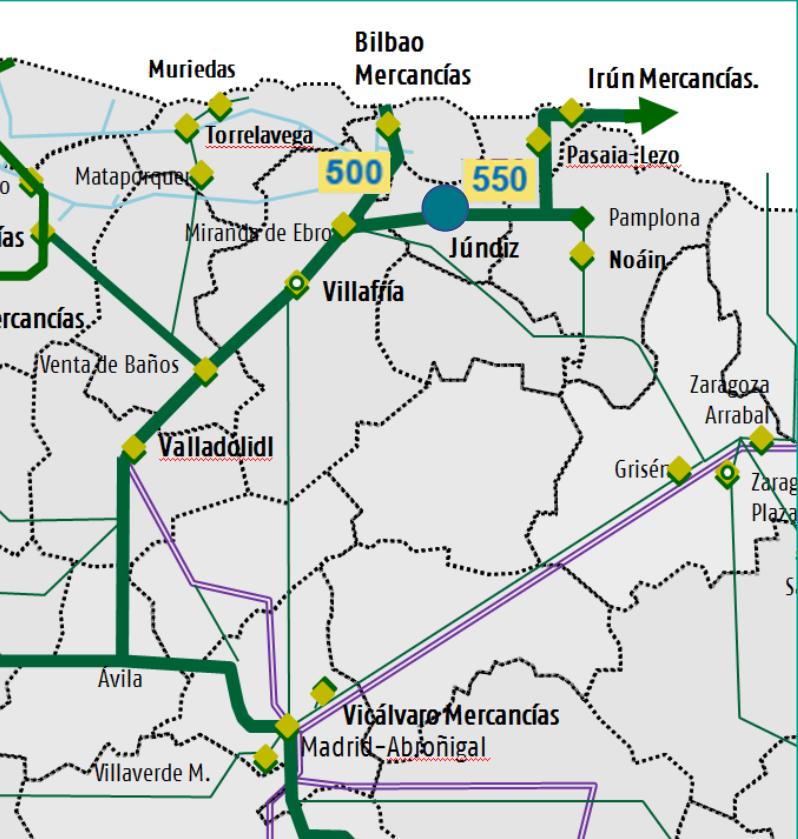
2

3



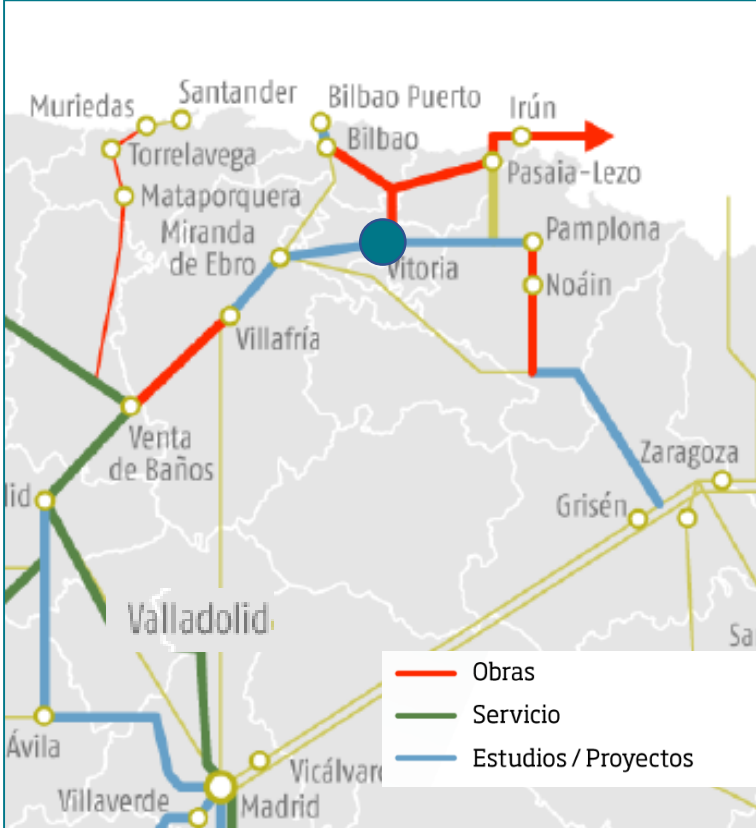


# LOGISTICS & TRANSPORT STRATEGIC NODE



Current connection:

- Iberian gauge/ max length freight for trains 550m



Future connection:

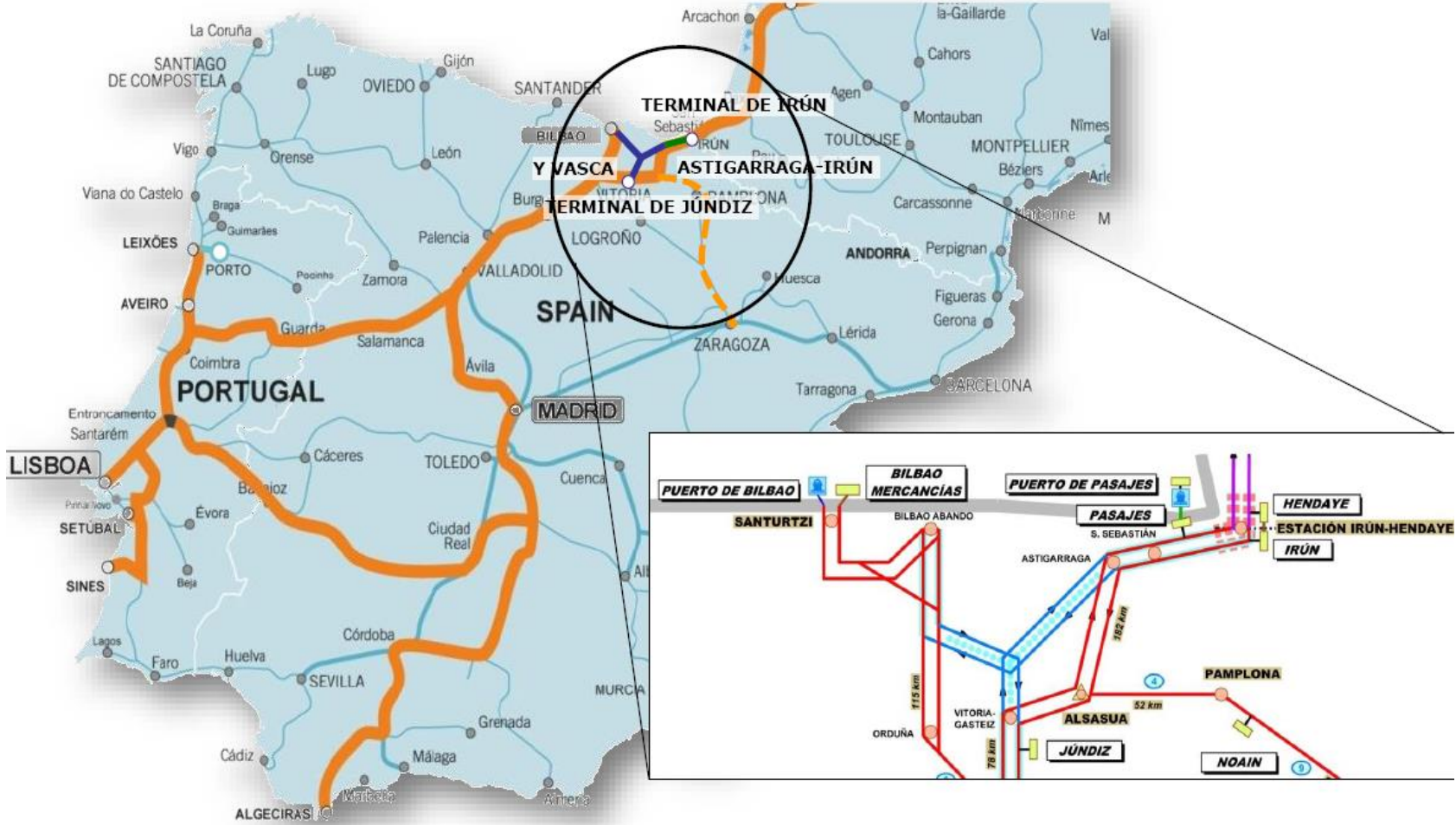
- North: standard gauge/ 740m freight trains
- South: Iberian gauge/ 740m freight trains



THIS PROJECT IS CO-FINANCED BY CONNECTING EUROPE FACILITY



# LOGISTICS & TRANSPORT STRATEGIC NODE



THIS PROJECT IS CO-FINANCED BY  
CONNECTING EUROPE FACILITY

1

2

3





CO-FINANCED BY THE EUROPEAN UNION

CONNECTING EUROPE FACILITY

# Vitoria-Júndiz Global & Phase 1 projects



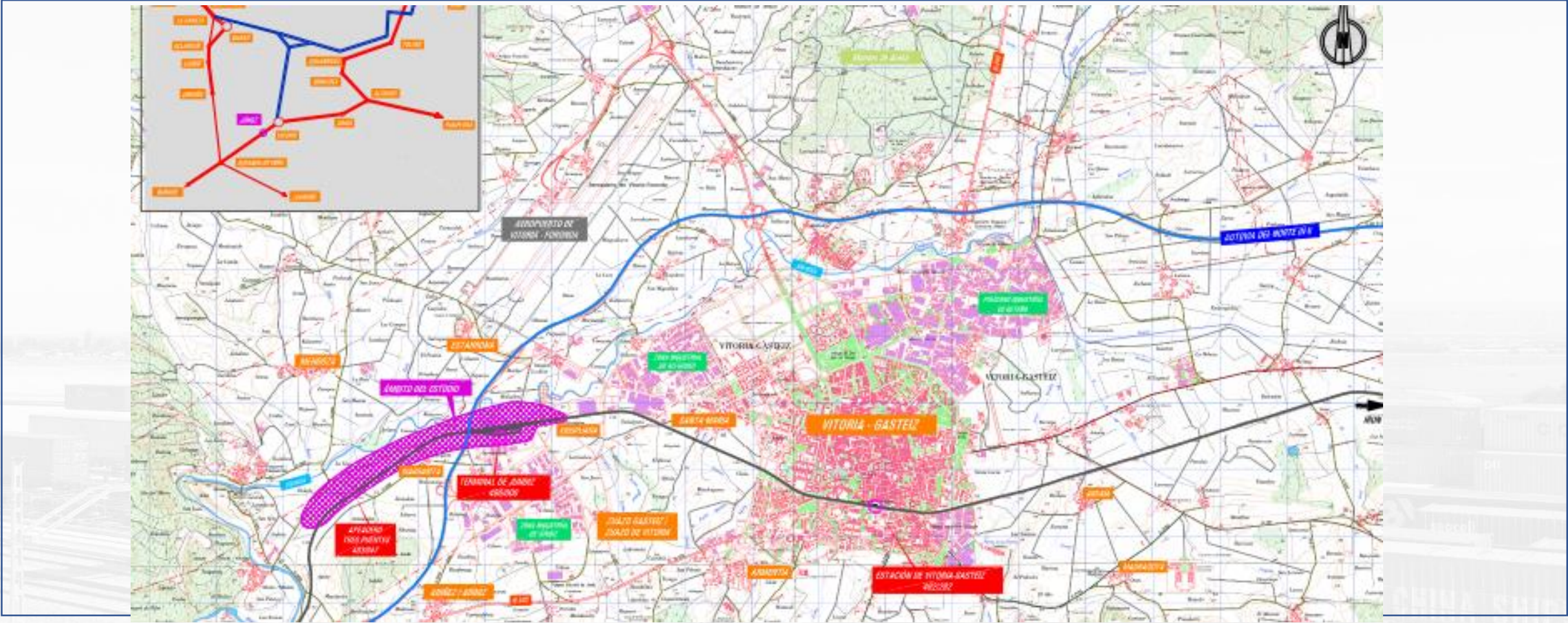
1

2

3



# GLOBAL PROJECT. LOCATION



THIS PROJECT IS CO-FINANCED BY  
CONNECTING EUROPE FACILITY

1

2

3





CO-FINANCED BY THE EUROPEAN UNION

CONNECTING EUROPE FACILITY

**2011**

**PROTOCOL of Cooperation SIGNED between Basque Government and Ministry of Public Works for the development of Jundiz Multimodal Platform**

**2014**

**FUNCTIONAL STUDY for the complete development of the multimodal platform and its connections finished.**

**2017**

**Establishing of the TECHNICAL COMMITTEE for the development of Júndiz and Lezo platforms**

**Call for EXPRESSIONS OF INTEREST to identify potential operators for rail motorway services, and defining the corresponding technical, operational, legal and contractual characteristics**

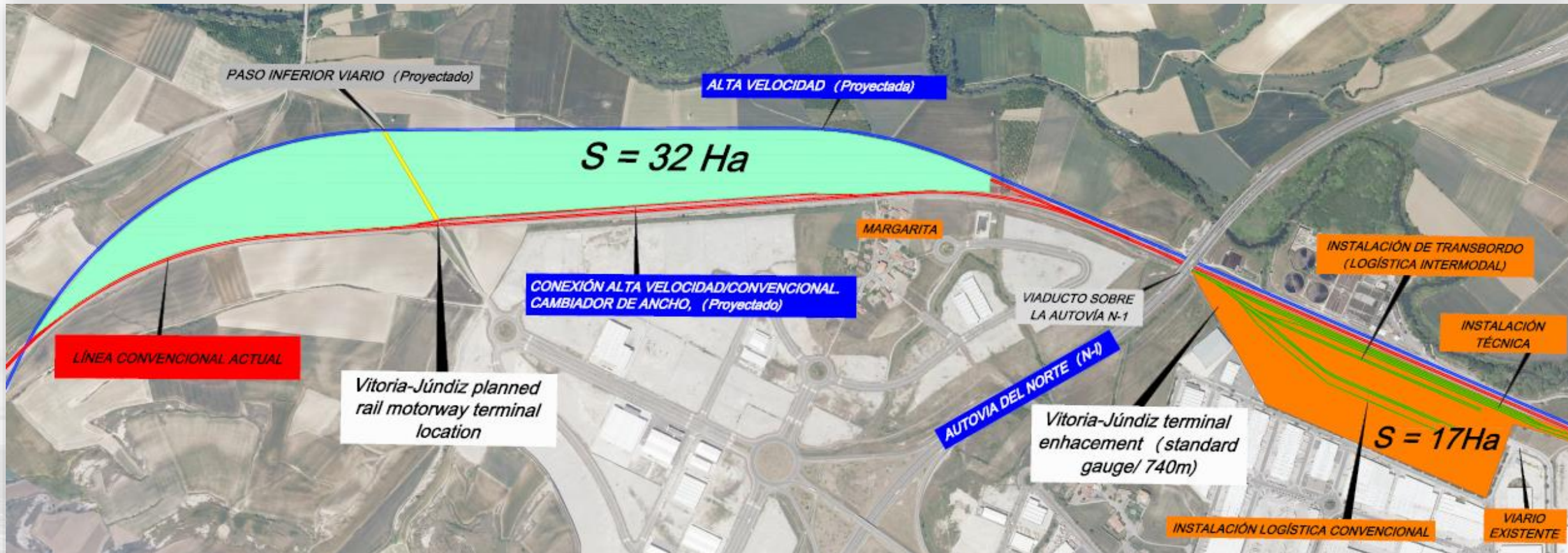
**2019**

**DETAILED DESIGN STUDIES for construction of standard track gauge connection and essential infrastructure in standard track gauge for the treatment of 740m long trains. Preliminary design study of a rail motorway terminal**

**DESIGN WORKS initiated**

**AGREEMENT No INEA/CEF/TRAN/A2016/136748  
5**

# GLOBAL PROJECT



The project extends to the whole influence area of the logistic multimodal platform including Adif's terminal (17 Ha) and the Basque Government proposed area (32 Ha)



THIS PROJECT IS CO-FINANCED BY  
CONNECTING EUROPE FACILITY

1

2

3



# NEEDS AND GOALS

The Basque country needs an INTERMODAL HUB with:



THIS PROJECT IS CO-FINANCED BY CONNECTING EUROPE FACILITY

- 1
- 2**
- 3

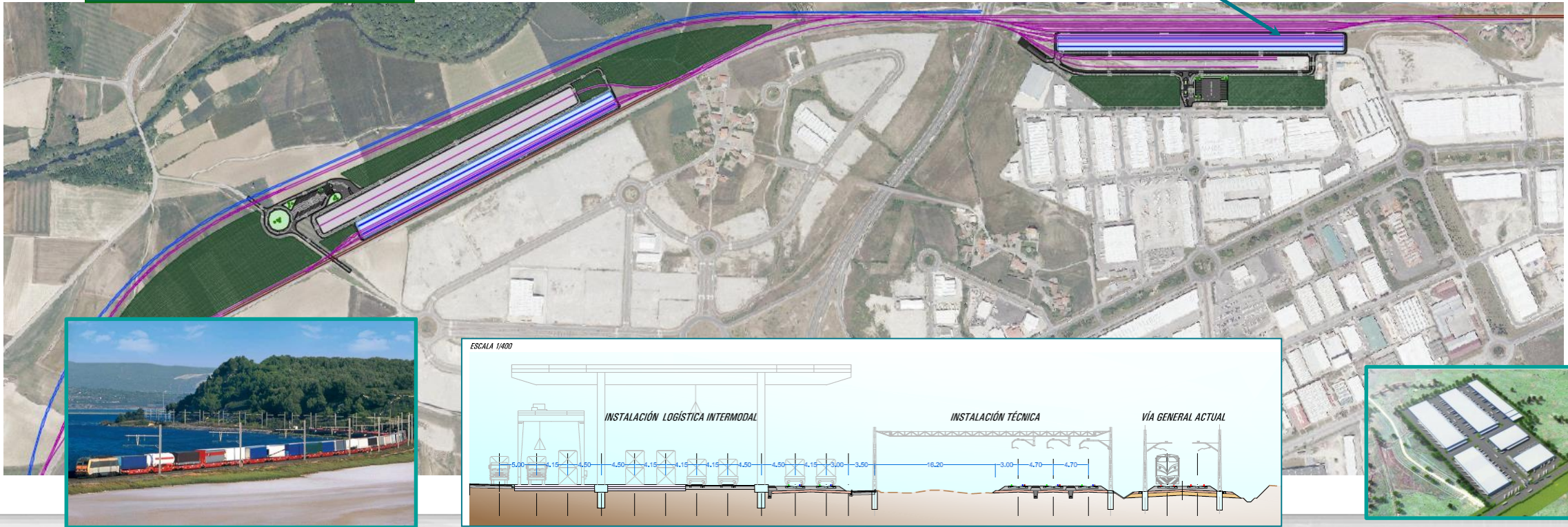


# GLOBAL PROJECT

**Phase 3**  
Enhancement functionality and Capacity in Júndiz-Villodas area

**Phase 2**  
Rail motorway terminal implementation

**Phase 1**  
Connection in standard gauge to Ten-T Corridor (Y basque)  
Arrival/dispatching trucks (for 740m l. trains/iberian + standar gauge)  
Intermodal terminal (740m/ iberian+standard gauge)  
Logistic Areas development



THIS PROJECT IS CO-FINANCED BY  
CONNECTING EUROPE FACILITY

1

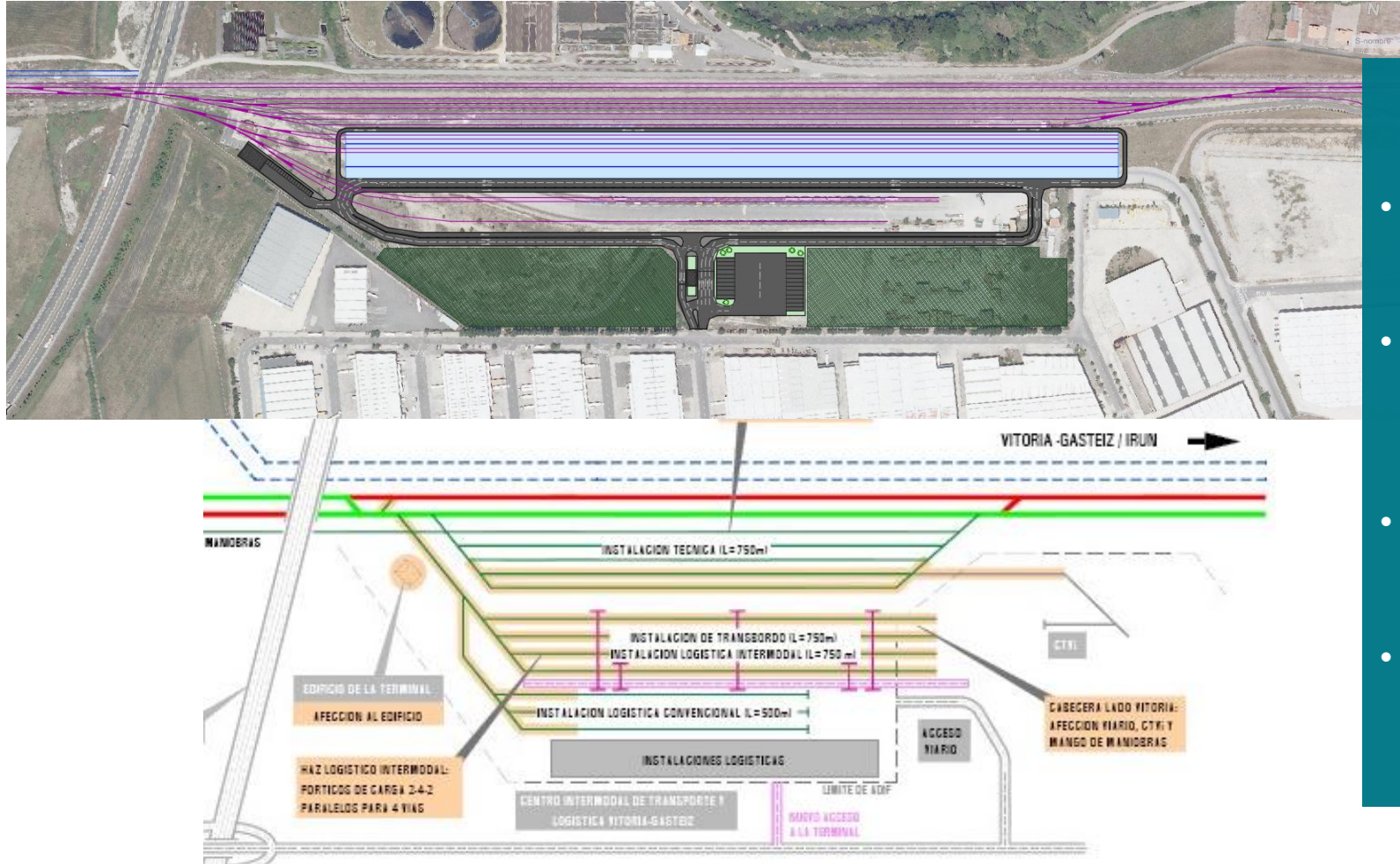
2

3





# PHASE 1



## Phase 1

- Connection in standard gauge to Ten-T Corridor (Y basque)
- Arrival/dispatching trucks (for 740m l. trains/iberian + standard gauge)
- Intermodal terminal (740m/ Iberian+standard gauge)
- Logistic Areas development



THIS PROJECT IS CO-FINANCED BY  
CONNECTING EUROPE FACILITY

1

2

3





CO-FINANCED BY THE EUROPEAN UNION

CONNECTING EUROPE FACILITY

# Vitoria-Júndiz

## Development Stages & Business Model



1

2

3



## DEVELOPMENT STAGES

PHASE	DESCRIPTION	Situation
1	Connection in standard gauge Arrival/dispatching trucks (for 740m l. trains/Iberian + standard gauge) Intermodal terminal (740m/ Iberian+standard gauge) Logistic Areas development	<b>Finished 2023</b>
2	Rail motorway terminal implementation	<b>&gt;2024</b>
3	Enhacement functionality and Capacity in Júndiz-Villodas area	<b>&gt; 2024</b>



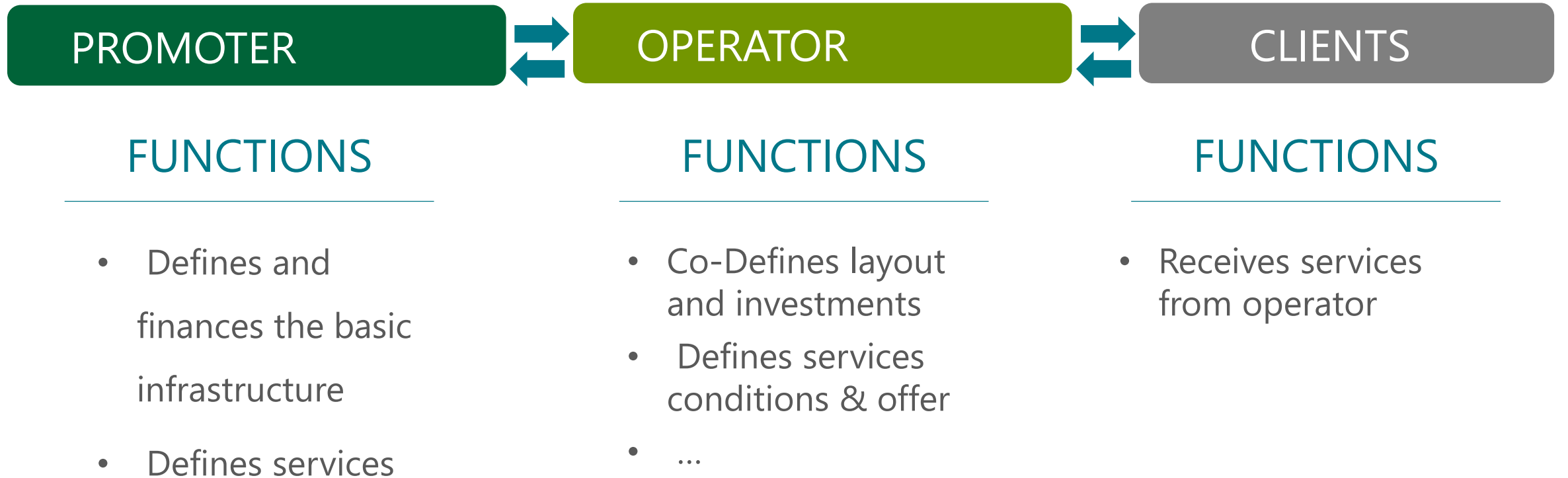
THIS PROJECT IS CO-FINANCED BY  
CONNECTING EUROPE FACILITY

1

2

3







CO-FINANCED BY THE EUROPEAN UNION

CONNECTING EUROPE FACILITY

# Vitoria-Júndiz Multimodal Platform

**THANK YOU VERY MUCH FOR YOUR ATTENTION**



16th TAG RAG meeting  
Bilbao Port, March 13th 2019

