

Rail Freight Corridor Monthly Punctuality Report

2020-10

Atlantic (RFC04)



Train type: FREIGHT

Punctuality threshold: 30 min.

Point list: RFC4 KPI2

List of locations: All locations

Reference operational train number (OTN) range from: All trains **to:** All trains

Reference OTN list: All trains

IM: All IMs

RU: All RUs

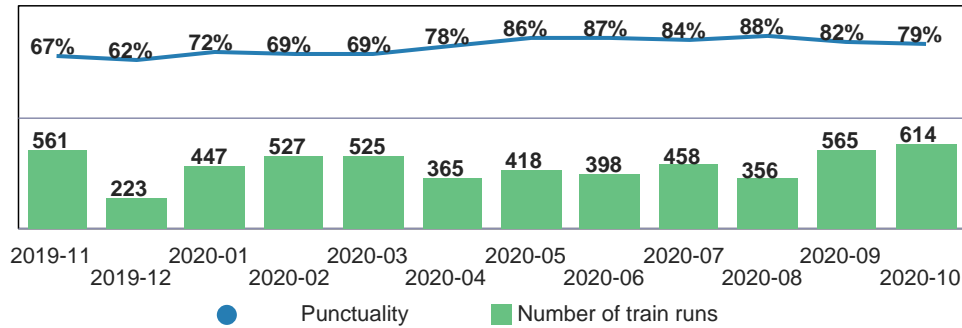
Number of train runs considered in report per direction:

Direction	# of train runs
East-West	692
West-East	656

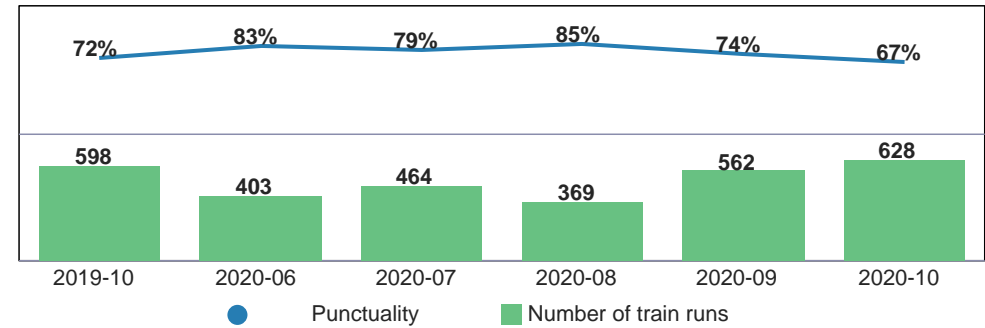
Punctuality development over period of 13 months

West-East

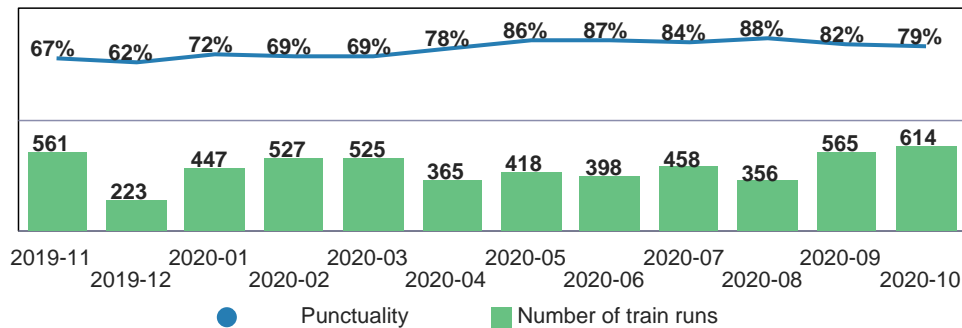
Real Origin



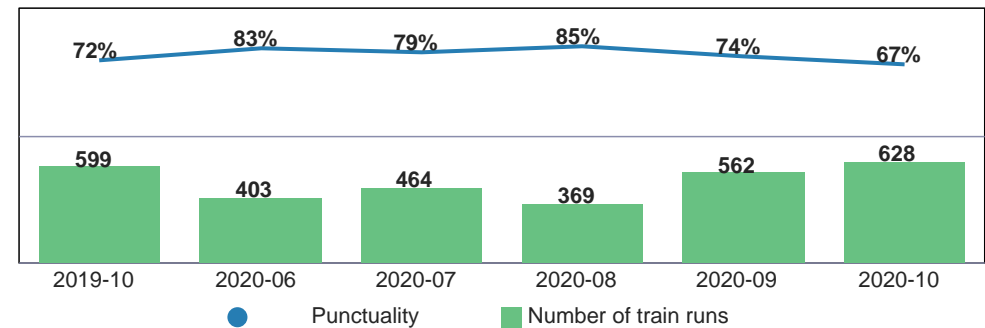
Real Destination



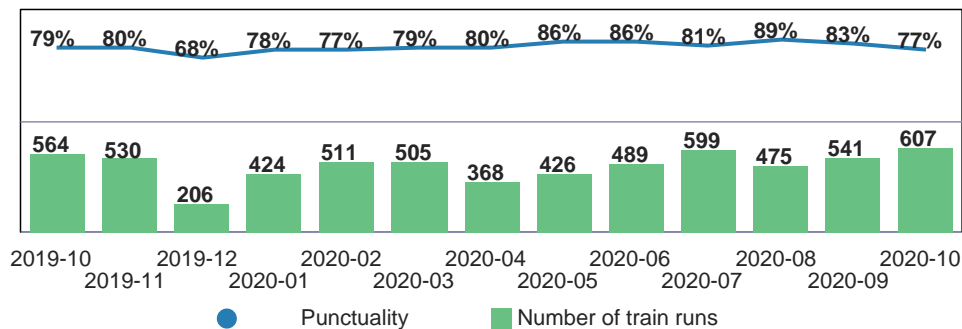
IM Origin



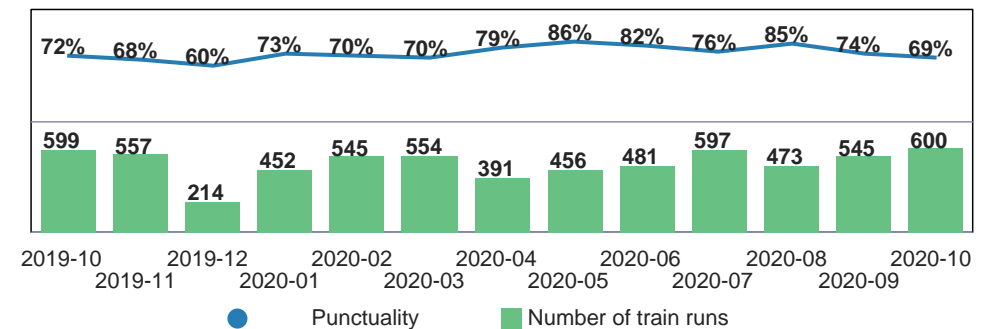
IM Destination



RFC Entry



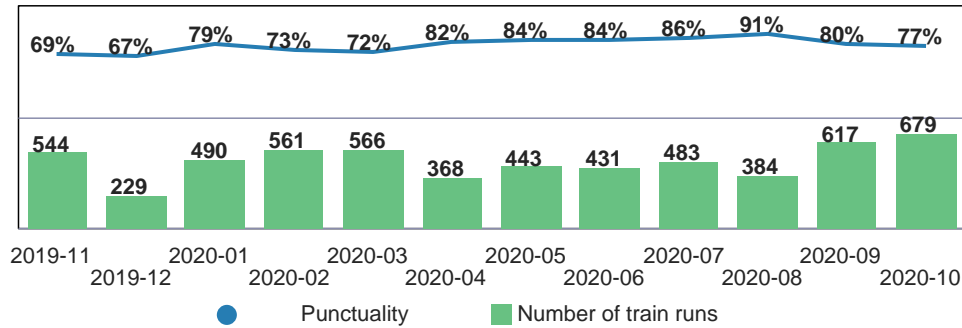
RFC Exit



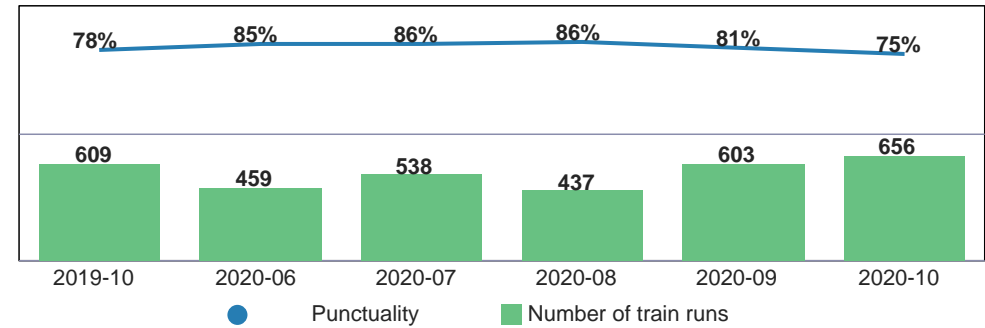
Punctuality development over period of 13 months

East-West

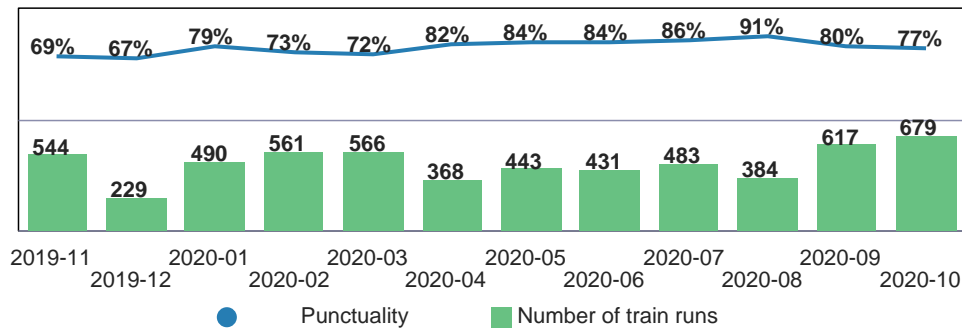
Real Origin



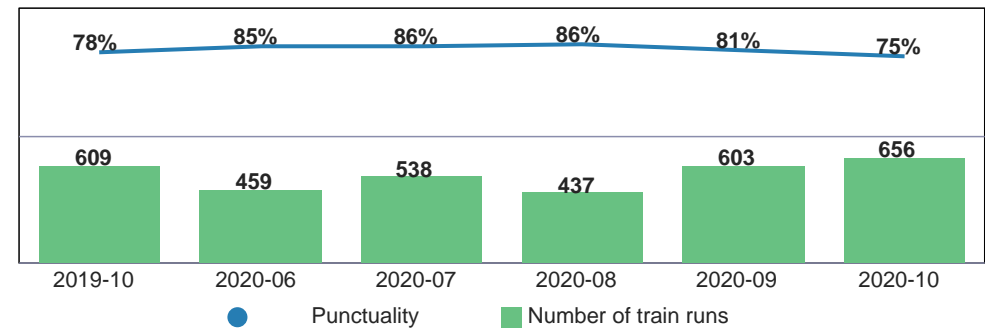
Real Destination



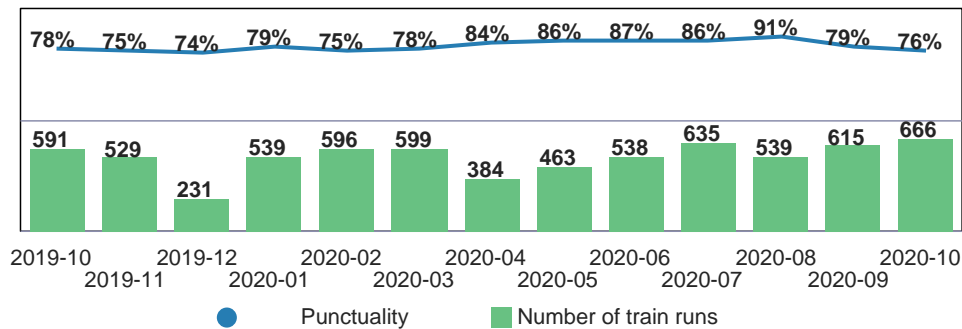
IM Origin



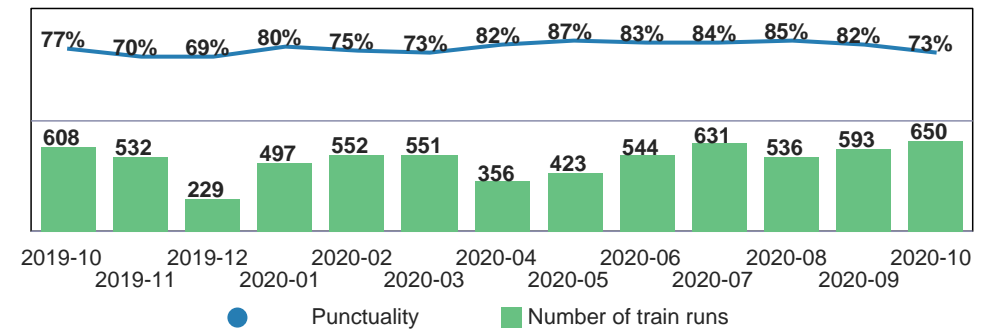
IM Destination



RFC Entry

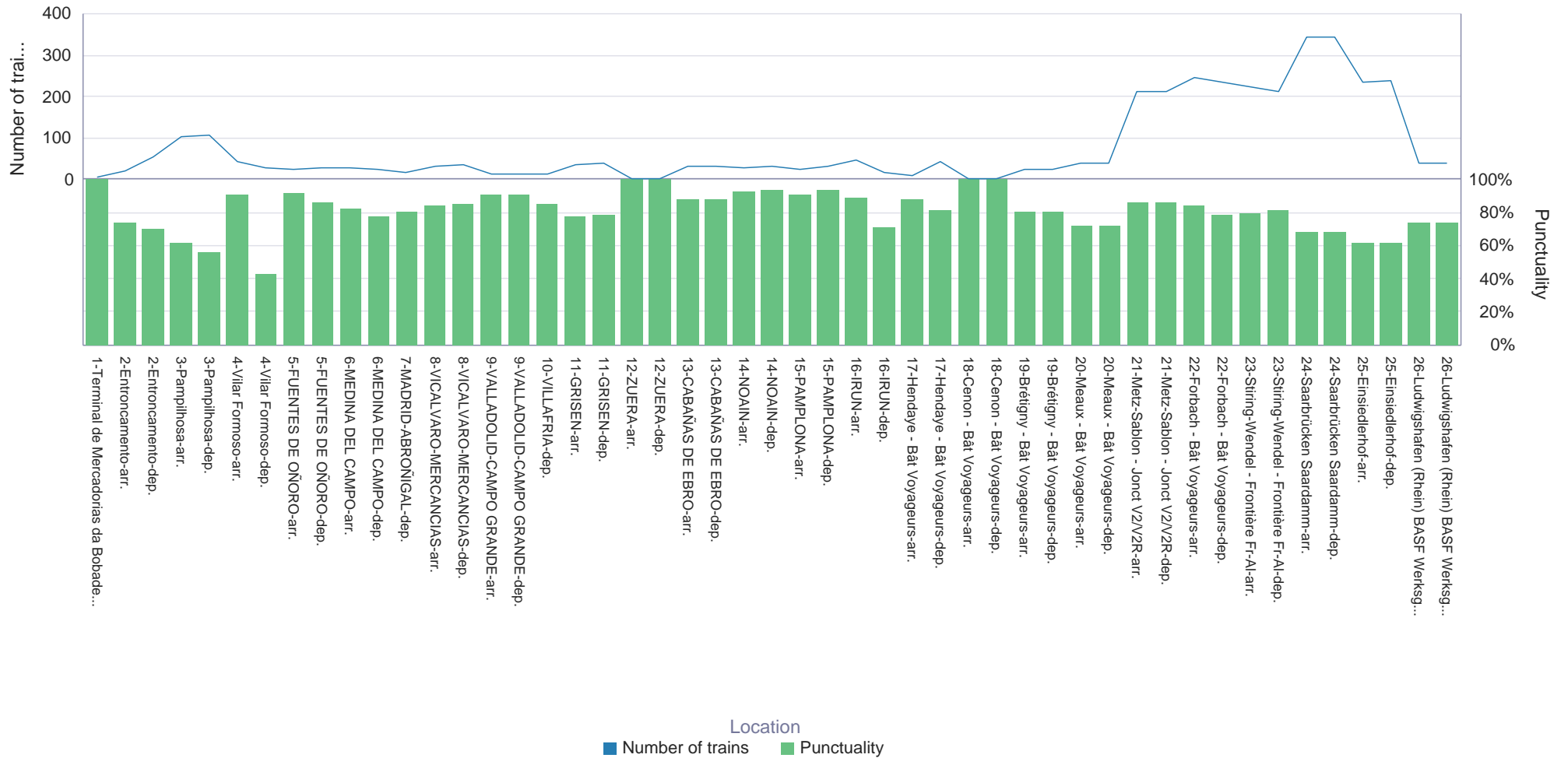


RFC Exit



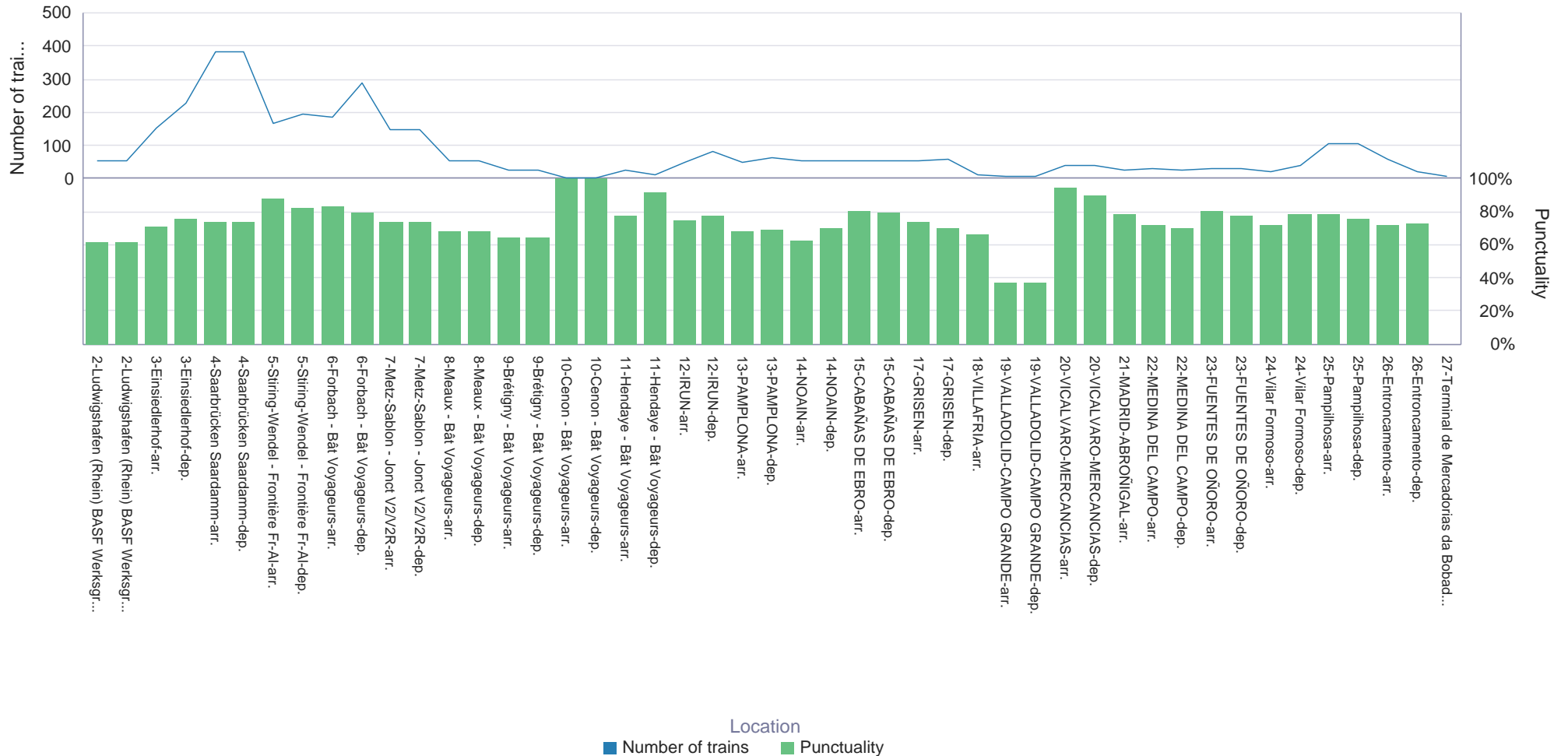
Punctuality per location during chosen time period

West-East



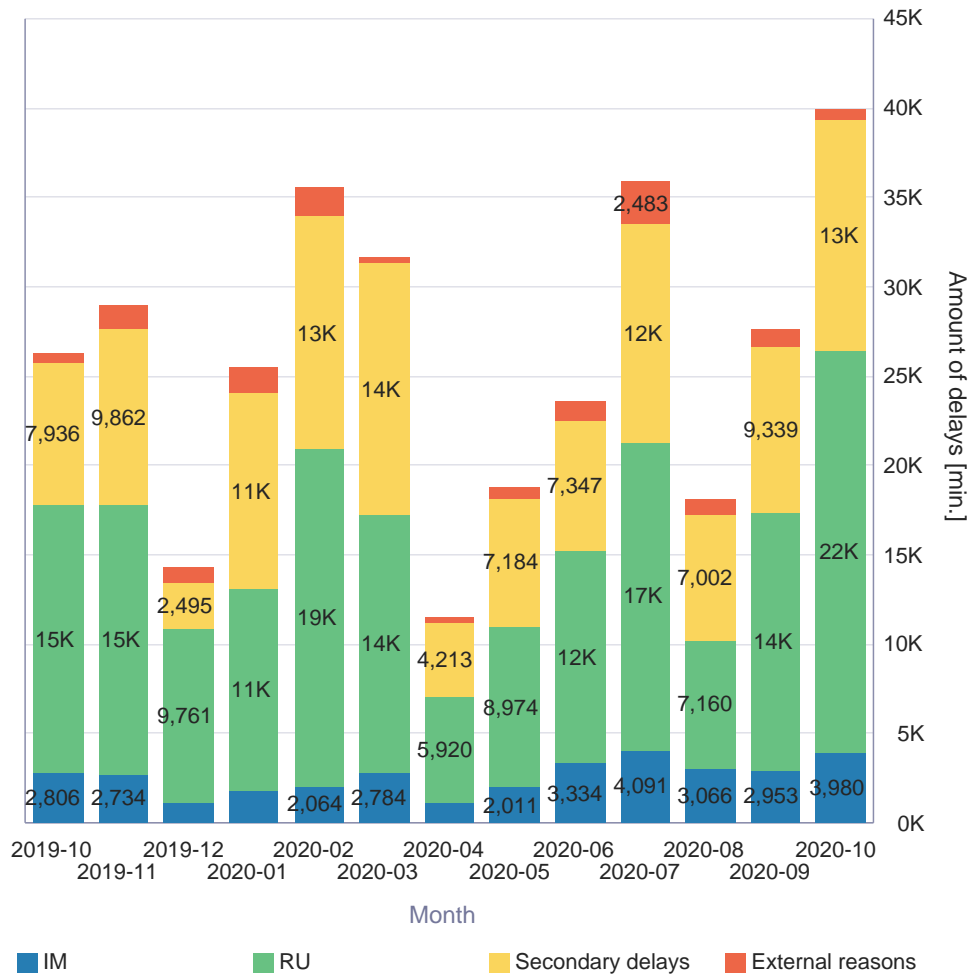
Punctuality per location during chosen time period

East-West

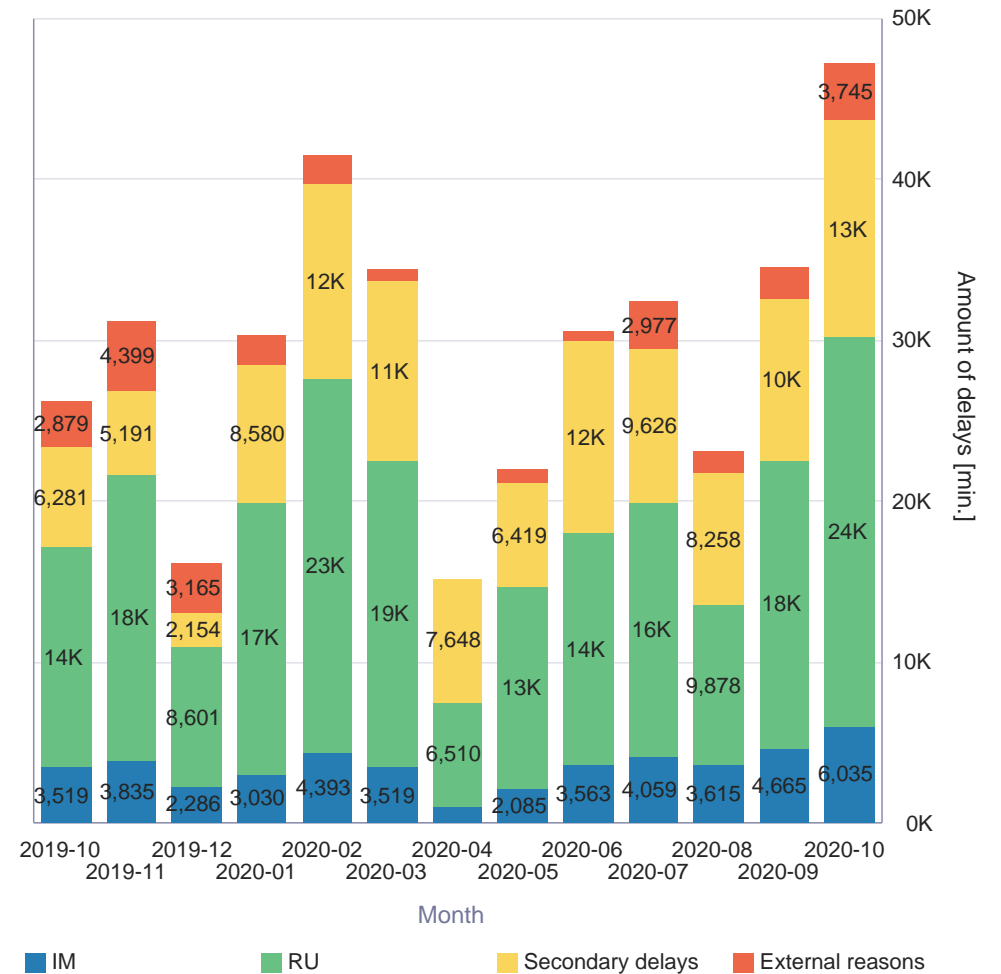


Amount and distribution of delays over period of 13 months

West-East

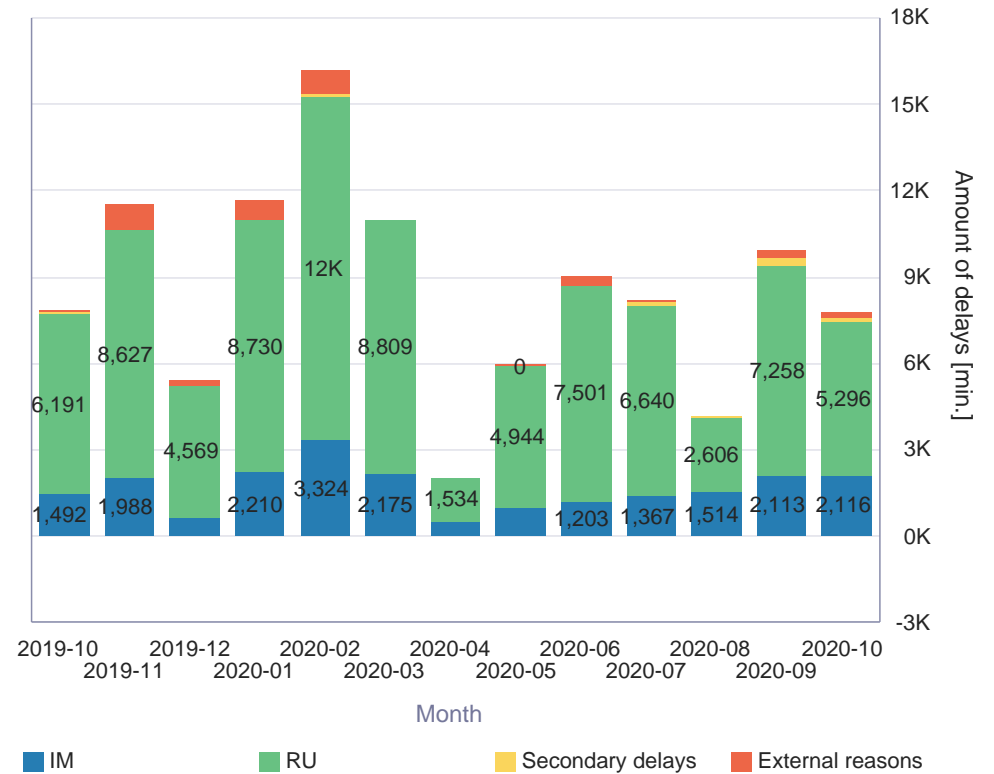
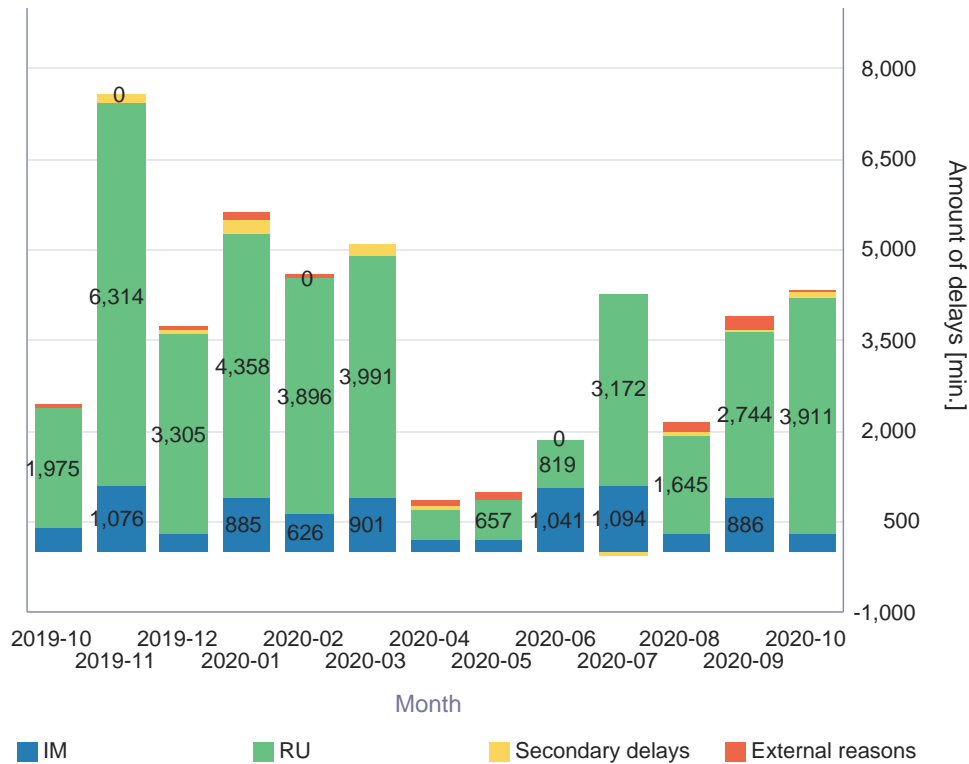


East-West



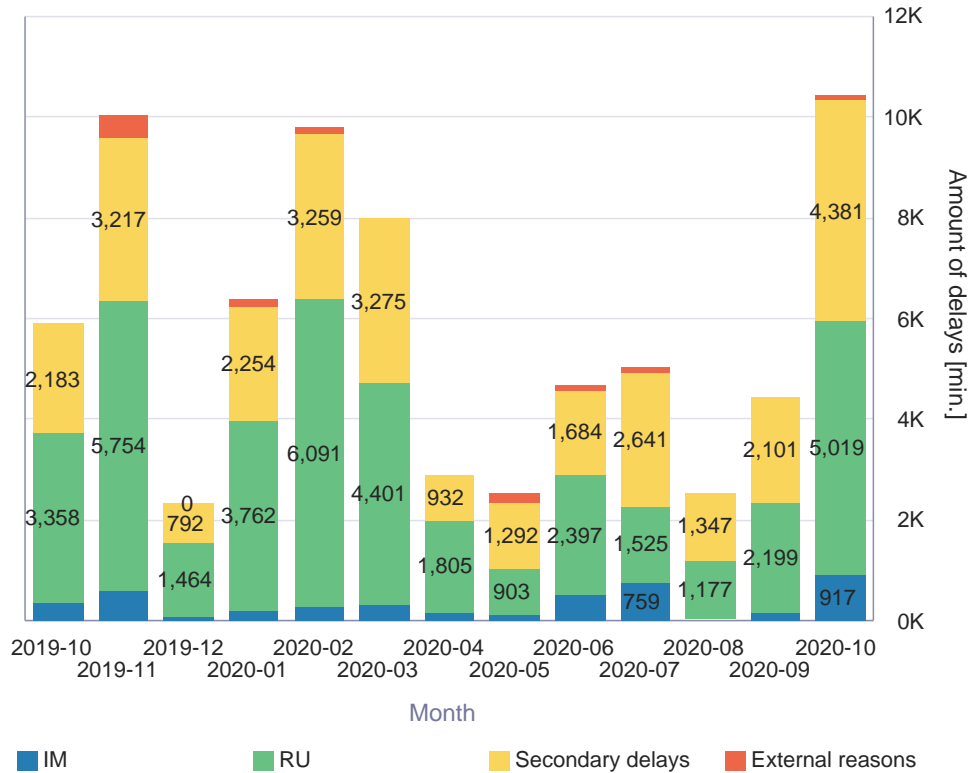
Amount and distribution of delays per IM over period of 13 months

ADIF

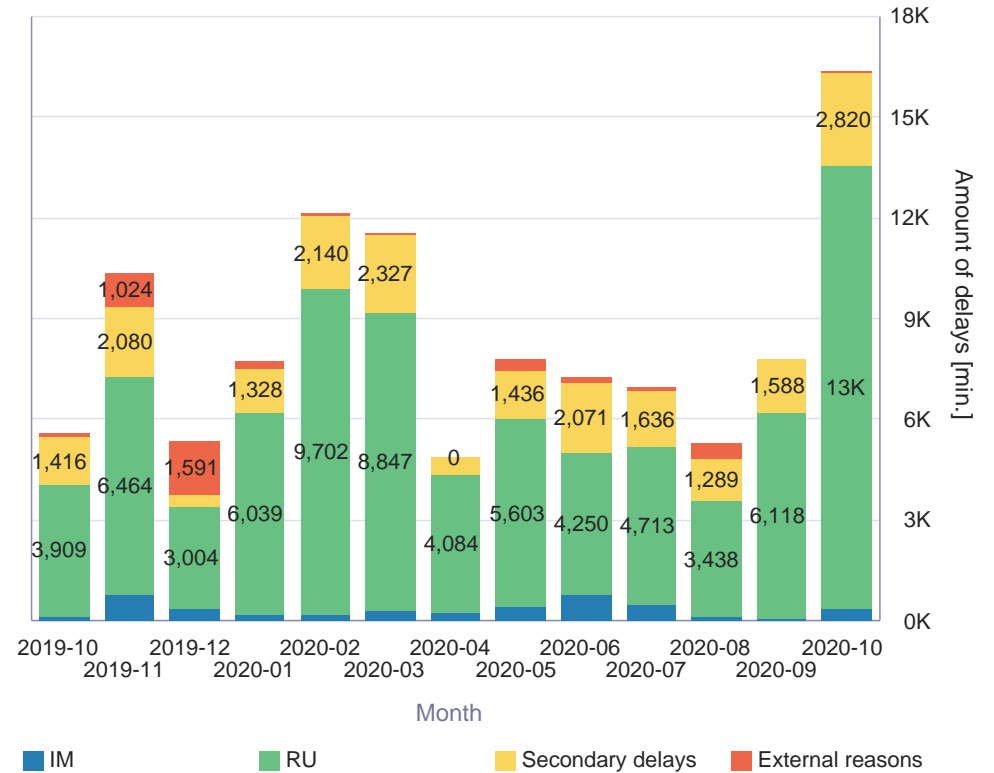


DB Netz

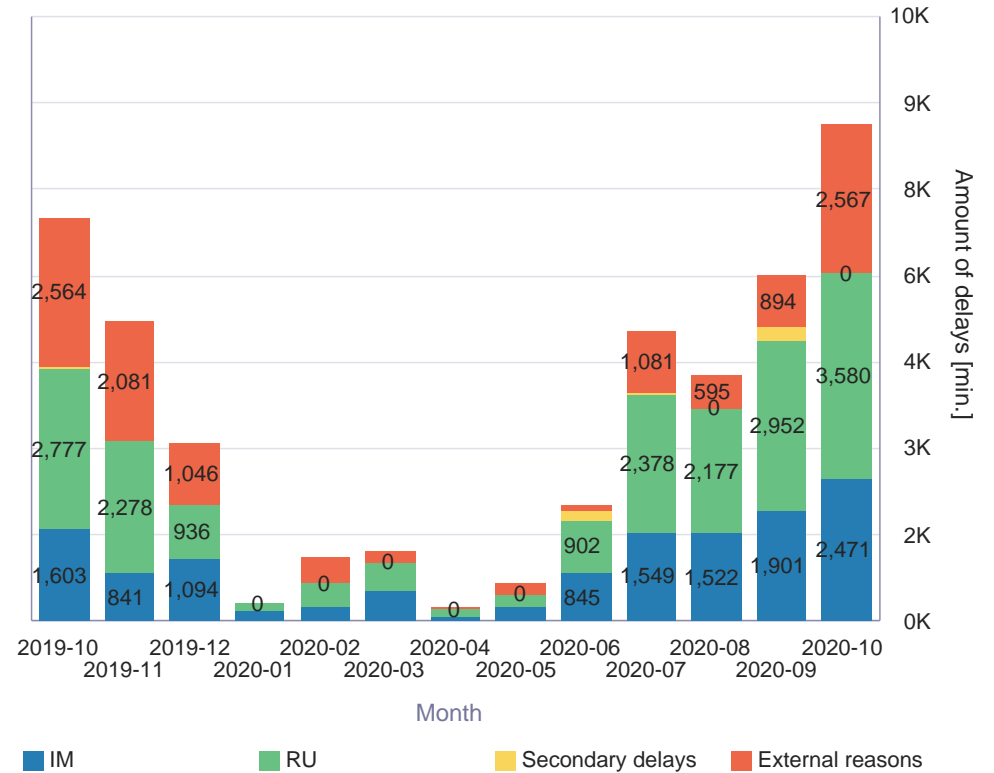
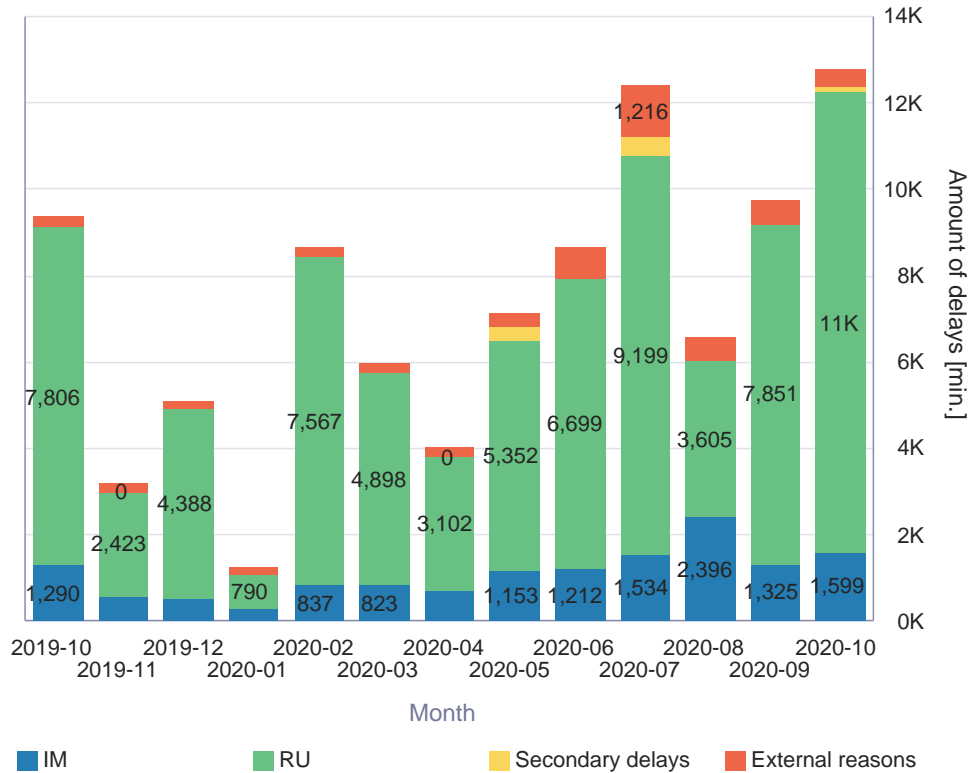
West-East



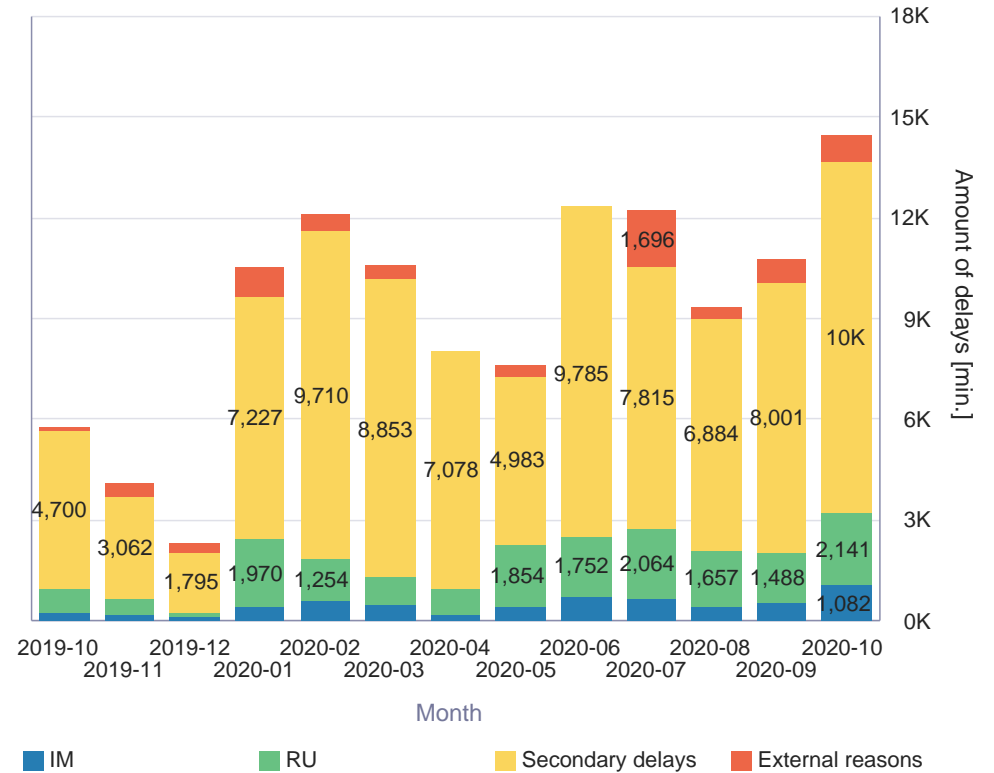
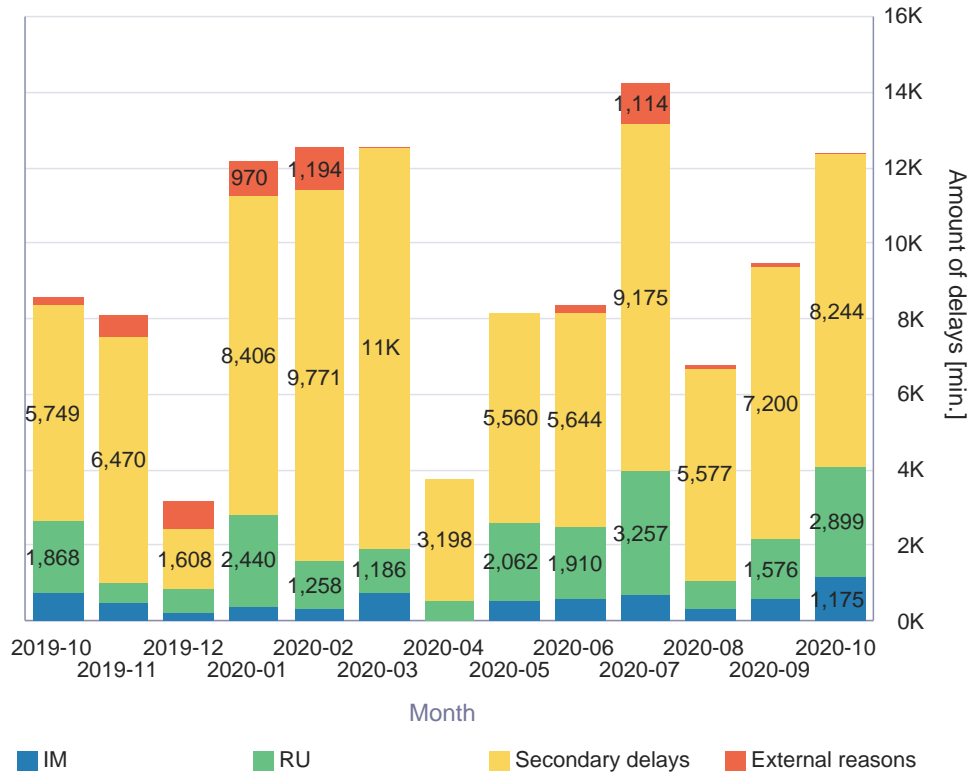
East-West



IP Infraestruturas de Portugal



SNCF Réseau

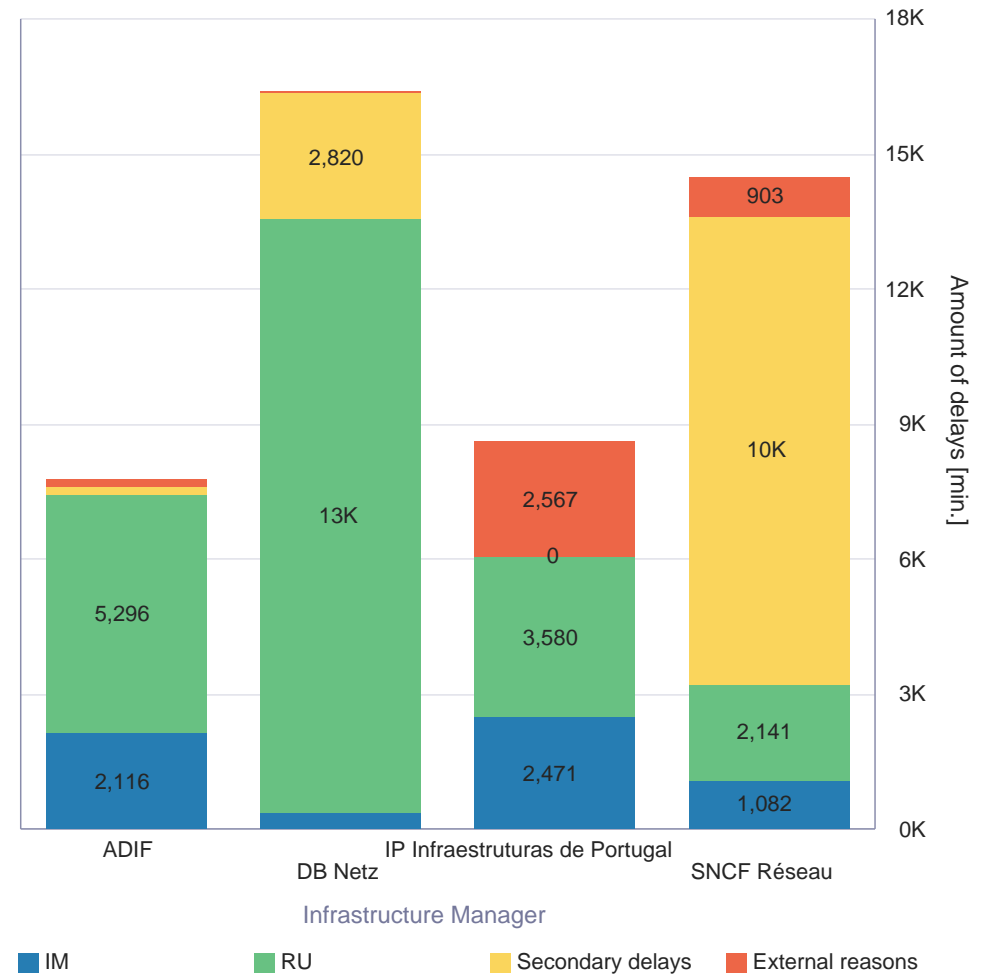


Amount and distribution of delays during chosen time period - All IMs overview

West-East



East-West



Key figures per location during chosen time period

West-East

IM	Location	Running status	# of runs	Punctuality	Avg. delta	Avg. delay of delayed trains	Avg. delay of all runs	# of missing timetable	# of missing running
IP Infraestruturas de Portugal	Terminal de Mercadorias da Bobadela	DEPARTURE_FROM_ORIGIN	5	100%	0		5	0	0
IP Infraestruturas de Portugal	Entroncamento	ARRIVAL	18	72%	22	102	30	0	0
IP Infraestruturas de Portugal	Entroncamento	ARRIVAL_AT_DESTINATION	1	100%	6		6	0	0
IP Infraestruturas de Portugal	Entroncamento	DEPARTURE	18	61%	23	73	30	0	0
IP Infraestruturas de Portugal	Entroncamento	DEPARTURE_FROM_ORIGIN	35	74%	19	76	22	0	0
IP Infraestruturas de Portugal	Pampilhosa	ARRIVAL	73	64%	32	97	41	0	0
IP Infraestruturas de Portugal	Pampilhosa	ARRIVAL_AT_DESTINATION	2	50%	146	288	146	0	0
IP Infraestruturas de Portugal	Pampilhosa	DEPARTURE	73	55%	52	116	57	0	0
IP Infraestruturas de Portugal	Pampilhosa	DEPARTURE_FROM_ORIGIN	7	71%	17	70	22	0	0
IP Infraestruturas de Portugal	Pampilhosa	RUN_THROUGH	28	54%	51	105	52	0	0
IP Infraestruturas de Portugal	Vilar Formoso	ARRIVAL	29	90%	4	231	25	0	0
IP Infraestruturas de Portugal	Vilar Formoso	ARRIVAL_AT_DESTINATION	14	93%	1	57	7	0	0
IP Infraestruturas de Portugal	Vilar Formoso	DEPARTURE	28	43%	73	124	75	0	0
ADIF	FUENTES DE OÑORO	ARRIVAL	18	94%	-88	604	38	0	0
ADIF	FUENTES DE OÑORO	DEPARTURE	22	86%	-58	401	58	0	0
ADIF	FUENTES DE OÑORO	RUN_THROUGH	7	86%	-145	145	41	1	0

IM	Location	Running status	# of runs	Punctuality	Avg. delta	Avg. delay of delayed trains	Avg. delay of all runs	# of missing timetable	# of missing running
ADIF	MEDINA DEL CAMPO	ARRIVAL	25	80%	-99	269	54	0	0
ADIF	MEDINA DEL CAMPO	DEPARTURE	19	74%	-32	283	75	1	0
ADIF	MEDINA DEL CAMPO	RUN_THROUGH	3	100%	-59		0	0	0
ADIF	MADRID-ABROÑIGAL	DEPARTURE_FROM_ORIGIN	15	80%	8	63	17	0	0
ADIF	VICALVARO-MERCANCIAS	ARRIVAL	4	100%	-150		0	0	0
ADIF	VICALVARO-MERCANCIAS	DEPARTURE	7	100%	-95		3	0	0
ADIF	VICALVARO-MERCANCIAS	RUN_THROUGH	27	81%	-14	60	15	0	0
ADIF	VALLADOLID-CAMPO GRANDE	ARRIVAL	6	83%	-28	123	20	1	0
ADIF	VALLADOLID-CAMPO GRANDE	DEPARTURE	6	83%	-20	139	23	1	0
ADIF	VALLADOLID-CAMPO GRANDE	RUN_THROUGH	5	100%	-45		0	0	0
ADIF	VILLAFRIA	DEPARTURE_FROM_ORIGIN	13	85%	17	108	22	0	0
ADIF	GRISEN	ARRIVAL	30	87%	5	62	15	0	0
ADIF	GRISEN	DEPARTURE	30	93%	-10	46	8	0	0
ADIF	GRISEN	DEPARTURE_FROM_ORIGIN	2	0%	78	78	78	0	0
ADIF	GRISEN	RUN_THROUGH	5	20%	226	301	241	0	0
ADIF	ZUERA	RUN_THROUGH	1	100%	-171		0	0	0
ADIF	CABAÑAS DE EBRO	RUN_THROUGH	33	88%	-7	63	13	0	0
ADIF	NOAIN	ARRIVAL	3	33%	38	70	47	0	0
ADIF	NOAIN	DEPARTURE	9	78%	-1	62	14	0	0
ADIF	NOAIN	RUN_THROUGH	23	100%	-42		3	0	0
ADIF	PAMPLONA	ARRIVAL	11	82%	-8	59	12	0	0
ADIF	PAMPLONA	DEPARTURE	22	91%	-32	50	6	0	0
ADIF	PAMPLONA	RUN_THROUGH	11	100%	-37		3	0	0
ADIF	IRUN	ARRIVAL	14	64%	7	70	25	1	0
ADIF	IRUN	ARRIVAL_AT_DESTINATION	29	100%	-57		0	0	0

IM	Location	Running status	# of runs	Punctuality	Avg. delta	Avg. delay of delayed trains	Avg. delay of all runs	# of missing timetable	# of missing running
ADIF	IRUN	DEPARTURE	14	64%	15	73	28	1	0
ADIF	IRUN	RUN_THROUGH	3	100%	-30		0	0	0
SNCF Réseau	Hendaye - Bât Voyageurs	ARRIVAL	7	100%	-5		4	0	0
SNCF Réseau	Hendaye - Bât Voyageurs	DEPARTURE	27	78%	9	61	15	0	0
SNCF Réseau	Hendaye - Bât Voyageurs	DEPARTURE_FROM_ORIGIN	15	93%	24	336	26	0	0
SNCF Réseau	Hendaye - Bât Voyageurs	RUN_THROUGH	1	0%	130	130	130	1	0
SNCF Réseau	Cenon - Bât Voyageurs	RUN_THROUGH	1	100%	6		6	0	0
SNCF Réseau	Brétigny - Bât Voyageurs	RUN_THROUGH	25	80%	10	76	19	0	0
SNCF Réseau	Meaux - Bât Voyageurs	RUN_THROUGH	39	72%	19	57	21	0	0
SNCF Réseau	Metz-Sablon - Jonct V2/V2R	RUN_THROUGH	210	86%	-2	67	12	1	0
SNCF Réseau	Forbach - Bât Voyageurs	ARRIVAL	108	82%	10	94	20	0	0
SNCF Réseau	Forbach - Bât Voyageurs	ARRIVAL_AT_DESTINATION	34	88%	5	49	12	0	0
SNCF Réseau	Forbach - Bât Voyageurs	DEPARTURE	141	76%	18	88	26	0	0
SNCF Réseau	Forbach - Bât Voyageurs	RUN_THROUGH	106	84%	4	67	19	1	0
SNCF Réseau	Stiring-Wendel - Frontière Fr-AI	ARRIVAL_AT_DESTINATION	14	57%	44	117	53	0	0
SNCF Réseau	Stiring-Wendel - Frontière Fr-AI	DEPARTURE_FROM_ORIGIN	2	50%	86	175	88	0	0
SNCF Réseau	Stiring-Wendel - Frontière Fr-AI	RUN_THROUGH	208	81%	6	70	16	0	0
DB Netz	Saarbrücken Saardamm	RUN_THROUGH	344	68%	39	135	49	15	0
DB Netz	Einsiedlerhof	ARRIVAL	1	0%	229	229	229	0	0
DB Netz	Einsiedlerhof	DEPARTURE	3	33%	96	134	96	0	0
DB Netz	Einsiedlerhof	RUN_THROUGH	235	62%	49	145	60	9	0
DB Netz	Ludwigshafen (Rhein) BASF Werksgränze	RUN_THROUGH	38	74%	23	160	46	1	0

Key figures per location during chosen time period

East-West

IM	Location	Running status	# of runs	Punctuality	Avg. delta	Avg. delay of delayed trains	Avg. delay of all runs	# of missing timetable	# of missing running
DB Netz	Ludwigshafen (Rhein) BASF Werksgränze	RUN_THROUGH	52	62%	26	63	29	2	0
DB Netz	Einsiedlerhof	DEPARTURE_FROM_ORIGIN	74	85%	-6	66	11	4	0
DB Netz	Einsiedlerhof	RUN_THROUGH	154	71%	40	144	47	5	0
DB Netz	Saarbrücken Saardamm	RUN_THROUGH	381	74%	24	137	39	19	0
SNCF Réseau	Stiring-Wendel - Frontière Fr-AI	DEPARTURE_FROM_ORIGIN	29	52%	45	94	49	0	0
SNCF Réseau	Stiring-Wendel - Frontière Fr-AI	RUN_THROUGH	165	88%	1	67	12	0	0
SNCF Réseau	Forbach - Bât Voyageurs	ARRIVAL	107	84%	5	70	15	0	0
SNCF Réseau	Forbach - Bât Voyageurs	ARRIVAL_AT_DESTINATION	4	100%	2		5	0	0
SNCF Réseau	Forbach - Bât Voyageurs	DEPARTURE	132	80%	11	63	18	0	0
SNCF Réseau	Forbach - Bât Voyageurs	DEPARTURE_FROM_ORIGIN	91	78%	13	65	18	0	0
SNCF Réseau	Forbach - Bât Voyageurs	RUN_THROUGH	72	82%	11	89	30	0	0
SNCF Réseau	Metz-Sablon - Jonct V2/V2R	RUN_THROUGH	147	73%	15	69	21	0	0
SNCF Réseau	Meaux - Bât Voyageurs	RUN_THROUGH	54	69%	35	99	37	0	0
SNCF Réseau	Brétigny - Bât Voyageurs	RUN_THROUGH	25	64%	40	105	42	0	0
SNCF Réseau	Cenon - Bât Voyageurs	RUN_THROUGH	2	100%	-2		0	0	0
SNCF Réseau	Hendaye - Bât Voyageurs	ARRIVAL	16	81%	0	208	39	0	0
SNCF Réseau	Hendaye - Bât Voyageurs	ARRIVAL_AT_DESTINATION	11	73%	28	83	28	0	0
SNCF Réseau	Hendaye - Bât Voyageurs	DEPARTURE	12	92%	-30	33	4	0	0
ADIF	IRUN	ARRIVAL	36	75%	-2	65	19	0	0
ADIF	IRUN	DEPARTURE	35	71%	6	66	23	0	0
ADIF	IRUN	DEPARTURE_FROM_ORIGIN	32	84%	13	63	15	0	0
ADIF	IRUN	RUN_THROUGH	12	75%	-13	43	14	0	0
ADIF	PAMPLONA	ARRIVAL	35	74%	6	66	21	0	0

IM	Location	Running status	# of runs	Punctuality	Avg. delta	Avg. delay of delayed trains	Avg. delay of all runs	# of missing timetable	# of missing running
ADIF	PAMPLONA	DEPARTURE	41	68%	11	65	23	0	0
ADIF	PAMPLONA	DEPARTURE_FROM_ORIGIN	11	91%	-18	37	4	0	0
ADIF	PAMPLONA	RUN_THROUGH	12	50%	41	72	46	0	0
ADIF	NOAIN	ARRIVAL	29	52%	39	72	40	0	0
ADIF	NOAIN	DEPARTURE	29	66%	21	72	27	0	0
ADIF	NOAIN	RUN_THROUGH	24	75%	-6	62	16	0	0
ADIF	CABAÑAS DE EBRO	DEPARTURE	1	0%	69	69	69	0	0
ADIF	CABAÑAS DE EBRO	RUN_THROUGH	52	81%	1	81	19	0	0
ADIF	GRISEN	ARRIVAL	48	79%	9	78	19	0	0
ADIF	GRISEN	DEPARTURE	49	76%	17	73	21	0	0
ADIF	GRISEN	DEPARTURE_FROM_ORIGIN	6	50%	68	124	68	0	0
ADIF	GRISEN	RUN_THROUGH	6	33%	73	137	91	0	0
ADIF	VILLAFRIA	ARRIVAL_AT_DESTINATION	12	67%	19	82	29	0	0
ADIF	VALLADOLID-CAMPO GRANDE	ARRIVAL	8	38%	11	53	33	0	0
ADIF	VALLADOLID-CAMPO GRANDE	DEPARTURE	8	38%	-2	49	30	0	0
ADIF	VICALVARO-MERCANCIAS	ARRIVAL	10	100%	-50		3	0	0
ADIF	VICALVARO-MERCANCIAS	DEPARTURE	12	83%	-26	50	8	0	0
ADIF	VICALVARO-MERCANCIAS	RUN_THROUGH	28	93%	-3	52	10	0	0
ADIF	MADRID-ABROÑIGAL	ARRIVAL_AT_DESTINATION	23	78%	8	47	14	0	0
ADIF	MEDINA DEL CAMPO	ARRIVAL	8	75%	-16	190	49	0	0
ADIF	MEDINA DEL CAMPO	ARRIVAL_AT_DESTINATION	13	92%	-24	53	5	0	0
ADIF	MEDINA DEL CAMPO	DEPARTURE	8	75%	-12	197	52	0	0
ADIF	MEDINA DEL CAMPO	DEPARTURE_FROM_ORIGIN	12	92%	13	34	17	12	0
ADIF	MEDINA DEL CAMPO	RUN_THROUGH	7	29%	21	48	34	0	0
ADIF	FUENTES DE OÑORO	ARRIVAL	31	81%	-21	92	19	0	0

IM	Location	Running status	# of runs	Punctuality	Avg. delta	Avg. delay of delayed trains	Avg. delay of all runs	# of missing timetable	# of missing running
ADIF	FUENTES DE OÑORO	DEPARTURE	31	77%	-16	87	22	0	0
IP Infraestruturas de Portugal	Vilar Formoso	ARRIVAL	21	71%	-39	101	30	0	0
IP Infraestruturas de Portugal	Vilar Formoso	DEPARTURE	31	71%	19	91	28	0	0
IP Infraestruturas de Portugal	Vilar Formoso	DEPARTURE_FROM_ORIGIN	10	100%	-18		5	0	0
IP Infraestruturas de Portugal	Pampilhosa	ARRIVAL	75	80%	7	114	24	0	0
IP Infraestruturas de Portugal	Pampilhosa	ARRIVAL_AT_DESTINATION	1	100%	-17		0	0	0
IP Infraestruturas de Portugal	Pampilhosa	DEPARTURE	74	76%	18	109	28	0	0
IP Infraestruturas de Portugal	Pampilhosa	RUN_THROUGH	31	74%	45	204	60	2	0
IP Infraestruturas de Portugal	Entroncamento	ARRIVAL	21	67%	28	84	33	0	0
IP Infraestruturas de Portugal	Entroncamento	ARRIVAL_AT_DESTINATION	35	74%	15	53	18	0	0
IP Infraestruturas de Portugal	Entroncamento	DEPARTURE	21	71%	27	82	30	0	0
IP Infraestruturas de Portugal	Entroncamento	DEPARTURE_FROM_ORIGIN	1	100%	-2		0	0	0
IP Infraestruturas de Portugal	Terminal de Mercadorias da Bobadela	ARRIVAL_AT_DESTINATION	4	0%	99	99	99	0	0

Delay per responsible company and IM area during chosen time period

West-East

IM	Delay reason group	Delay responsible company	Delay ratio (IM)	Delay ratio (total)	Sum of delay minutes
ADIF	1-IM	ADIF	7%	1%	289
ADIF	2-RU	Generated RU: 71/2071	50%	5%	2,193
ADIF	2-RU	Generated RU: 71/3569	21%	2%	933
ADIF	2-RU	RENFE MERCANCÍAS, S.A.	32%	3%	1,382
ADIF	2-RU	Transfesa	-13%	-1%	-578
ADIF	2-RU	0071 Unknown Railway Undertaking	-0%	-0%	-19
ADIF	8-EXTERNAL	(ADIF)	1%	0%	41
ADIF	9-SECONDARY	(ADIF)	2%	0%	108
DB Netz	1-IM	DB Netz	9%	2%	917
DB Netz	2-RU	BahnLog	0%	0%	33
DB Netz	2-RU	Captrain CW Neu-Ulm	6%	2%	604
DB Netz	2-RU	Captrain Deutschland CargoWest Gütersloh	1%	0%	97
DB Netz	2-RU	CFL Cargo Deutschland GmbH, Kunde CargoL	0%	0%	5
DB Netz	2-RU	DB Cargo AG	38%	10%	3,924
DB Netz	2-RU	DB Cargo AG - KV; nur Kunde RCA	0%	0%	28
DB Netz	2-RU	EBB Pressnitzalbahn mbH	0%	0%	8
DB Netz	2-RU	RBH Logistics - GV - Industrial	2%	0%	187
DB Netz	2-RU	Rhenus Rail St.Ingbert GmbH	0%	0%	36
DB Netz	2-RU	0080 Unknown Railway Undertaking	1%	0%	97
DB Netz	8-EXTERNAL	(DB Netz)	1%	0%	118
DB Netz	9-SECONDARY	(DB Netz)	42%	11%	4,381
IP Infraestruturas de Portugal	1-IM	IP Infraestruturas de Portugal	13%	4%	1,599
IP Infraestruturas de Portugal	2-RU	Medway	9%	3%	1,148
IP Infraestruturas de Portugal	2-RU	Takargo	74%	24%	9,465
IP Infraestruturas de Portugal	8-EXTERNAL	(IP Infraestruturas de Portugal)	3%	1%	411

IM	Delay reason group	Delay responsible company	Delay ratio (IM)	Delay ratio (total)	Sum of delay minutes
IP Infraestruturas de Portugal	9-SECONDARY	(IP Infraestruturas de Portugal)	1%	0%	159
SNCF Réseau	1-IM	SNCF Réseau	9%	3%	1,175
SNCF Réseau	2-RU	Euro Cargo Rail	20%	6%	2,487
SNCF Réseau	2-RU	Europorte France	0%	0%	22
SNCF Réseau	2-RU	SNCF-FRET	3%	1%	353
SNCF Réseau	2-RU	VFLI-Voies ferrees locales industrielles	0%	0%	29
SNCF Réseau	2-RU	0087 Unknown Railway Undertaking	0%	0%	8
SNCF Réseau	8-EXTERNAL	(SNCF Réseau)	1%	0%	105
SNCF Réseau	9-SECONDARY	(SNCF Réseau)	66%	21%	8,244

Delay per responsible company and IM area during chosen time period

East-West

IM	Delay reason group	Delay responsible company	Delay ratio (IM)	Delay ratio (total)	Sum of delay minutes
ADIF	1-IM	ADIF	27%	4%	2,116
ADIF	2-RU	Generated RU: 71/2071	24%	4%	1,845
ADIF	2-RU	Generated RU: 71/3569	2%	0%	165
ADIF	2-RU	RENFE MERCANCÍAS, S.A.	39%	6%	3,015
ADIF	2-RU	Transfesa	3%	1%	267
ADIF	2-RU	0071 Unknown Railway Undertaking	0%	0%	4
ADIF	8-EXTERNAL	(ADIF)	3%	0%	208
ADIF	9-SECONDARY	(ADIF)	2%	0%	173
DB Netz	1-IM	DB Netz	2%	1%	366
DB Netz	2-RU	Captrain CW Neu-Ulm	0%	0%	8
DB Netz	2-RU	Captrain Deutschland CargoWest Gütersloh	5%	2%	767
DB Netz	2-RU	CFL Cargo Deutschland GmbH, Kunde CargoL	0%	0%	80
DB Netz	2-RU	DB Cargo AG	71%	25%	11,635
DB Netz	2-RU	RBH Logistics - GV - Industrial	2%	1%	257
DB Netz	2-RU	Rhenus Rail St.Ingbert GmbH	0%	0%	56
DB Netz	2-RU	0080 Unknown Railway Undertaking	2%	1%	349
DB Netz	8-EXTERNAL	(DB Netz)	0%	0%	67
DB Netz	9-SECONDARY	(DB Netz)	17%	6%	2,820
IP Infraestruturas de Portugal	1-IM	IP Infraestruturas de Portugal	29%	5%	2,471
IP Infraestruturas de Portugal	2-RU	Medway	9%	2%	767
IP Infraestruturas de Portugal	2-RU	Takargo	31%	6%	2,697
IP Infraestruturas de Portugal	2-RU	0094 Unknown Railway Undertaking	1%	0%	116
IP Infraestruturas de Portugal	8-EXTERNAL	(IP Infraestruturas de Portugal)	30%	5%	2,567
SNCF Réseau	1-IM	SNCF Réseau	7%	2%	1,082
SNCF Réseau	2-RU	Euro Cargo Rail	11%	3%	1,537

IM	Delay reason group	Delay responsible company	Delay ratio (IM)	Delay ratio (total)	Sum of delay minutes
SNCF Réseau	2-RU	SNCF-FRET	4%	1%	575
SNCF Réseau	2-RU	VFLI-Voies ferrees locales industrielles	0%	0%	29
SNCF Réseau	8-EXTERNAL	(SNCF Réseau)	6%	2%	903
SNCF Réseau	9-SECONDARY	(SNCF Réseau)	72%	22%	10,375

Top 10 highly delayed trains during chosen time period

West-East

Real Origin						Real Destination					
OTN	# of runs	# of delayed runs	Avg. delay of delayed trains	Avg. delay of all runs	Sum of delays	OTN	# of runs	# of delayed runs	Avg. delay of delayed trains	Avg. delay of all runs	Sum of delays
49235	37	14	160	61	2,260	46367	4	4	631	631	2,525
45207	14	3	366	83	1,167	44205	18	6	339	114	2,061
41255	18	5	200	60	1,073	49235	35	14	121	49	1,714
45261	2	1	813	409	818	49277	11	3	472	134	1,475
48838	10	8	92	78	778	45265	2	2	615	615	1,230
42818	36	9	76	21	771	44241	22	10	108	56	1,230
63153	4	3	228	171	684	45207	13	9	125	89	1,158
42229	8	6	103	77	619	49221	12	7	144	86	1,029
41804	2	1	604	306	611	41810	7	4	223	128	897
83346	1	1	593	593	593	48838	9	3	296	99	892

IM Origin						IM Destination					
OTN	# of runs	# of delayed runs	Avg. delay of delayed trains	Avg. delay of all runs	Sum of delays	OTN	# of runs	# of delayed runs	Avg. delay of delayed trains	Avg. delay of all runs	Sum of delays
49235	37	14	160	61	2,260	46367	4	4	631	631	2,525
45207	14	3	366	83	1,167	44205	18	6	339	114	2,061
41255	18	5	200	60	1,073	49235	35	14	121	49	1,714
45261	2	1	813	409	818	49277	11	3	472	134	1,475
48838	10	8	92	78	778	45265	2	2	615	615	1,230
42818	36	9	76	21	771	44241	22	10	108	56	1,230
63153	4	3	228	171	684	45207	13	9	125	89	1,158
42229	8	6	103	77	619	49221	12	7	144	86	1,029
41804	2	1	604	306	611	41810	7	4	223	128	897
83346	1	1	593	593	593	48838	9	3	296	99	892

RFC Entry

RFC Exit

OTN	# of runs	# of delayed runs	Avg. delay of delayed trains	Avg. delay of all runs	Sum of delays
49235	37	14	160	61	2,267
45207	14	3	364	83	1,161
41255	18	5	198	58	1,050
45261	2	1	813	411	822
63153	4	4	204	204	817
48838	10	8	92	78	778
42818	35	8	72	19	662
41804	2	1	604	306	611
49221	12	5	117	50	605
83346	1	1	593	593	593

OTN	# of runs	# of delayed runs	Avg. delay of delayed trains	Avg. delay of all runs	Sum of delays
46367	4	4	631	631	2,525
44205	18	6	334	111	2,005
49235	35	14	113	46	1,610
49277	11	3	472	132	1,454
45265	2	2	615	615	1,230
45207	13	9	124	87	1,127
44241	22	7	125	50	1,095
49221	12	7	135	81	970
41810	7	4	220	127	887
83340	10	9	98	88	881

Top 10 highly delayed trains during chosen time period

East-West

Real Origin						Real Destination					
OTN	# of runs	# of delayed runs	Avg. delay of delayed trains	Avg. delay of all runs	Sum of delays	OTN	# of runs	# of delayed runs	Avg. delay of delayed trains	Avg. delay of all runs	Sum of delays
49236	11	10	230	209	2,302	44228	23	4	493	88	2,017
44228	23	5	259	61	1,401	45211	10	3	513	154	1,543
48843	4	3	354	266	1,062	98688	1	1	1108	1108	1,108
45248	4	4	226	226	903	48843	4	3	355	267	1,067
44222	17	8	85	44	743	42201	5	3	319	192	959
98688	1	1	595	595	595	46354	4	3	310	233	933
48245	10	4	136	54	542	48296	2	1	893	446	893
41803	6	3	162	81	486	49217	6	4	202	140	840
47240	8	6	78	60	479	48245	10	4	143	57	571
42226	9	8	60	53	478	41803	6	2	253	87	520

IM Origin						IM Destination					
OTN	# of runs	# of delayed runs	Avg. delay of delayed trains	Avg. delay of all runs	Sum of delays	OTN	# of runs	# of delayed runs	Avg. delay of delayed trains	Avg. delay of all runs	Sum of delays
49236	11	10	230	209	2,302	44228	23	4	493	88	2,017
44228	23	5	259	61	1,401	45211	10	3	513	154	1,543
48843	4	3	354	266	1,062	98688	1	1	1,108	1,108	1,108
45248	4	4	226	226	903	48843	4	3	355	267	1,067
44222	17	8	85	44	743	42201	5	3	319	192	959
98688	1	1	595	595	595	46354	4	3	310	233	933
48245	10	4	136	54	542	48296	2	1	893	446	893
41803	6	3	162	81	486	49217	6	4	202	140	840
47240	8	6	78	60	479	48245	10	4	143	57	571
42226	9	8	60	53	478	41803	6	2	253	87	520

RFC Entry

RFC Exit

OTN	# of runs	# of delayed runs	Avg. delay of delayed trains	Avg. delay of all runs	Sum of delays	OTN	# of runs	# of delayed runs	Avg. delay of delayed trains	Avg. delay of all runs	Sum of delays
49236	11	10	232	211	2,318	44228	23	3	643	87	1,997
44228	23	5	260	63	1,446	98688	1	1	1108	1108	1,108
98688	1	1	1,146	1,146	1,146	48843	4	3	355	267	1,067
48296	2	1	1,130	565	1,130	42201	5	3	320	193	963
48843	4	3	326	244	977	46354	4	2	448	230	920
45248	4	4	226	226	903	48296	2	1	893	446	893
44222	17	9	83	46	786	49217	6	4	202	140	840
48245	10	4	136	54	542	41257	20	10	56	33	658
41803	6	3	161	80	483	48245	10	4	143	57	571
47240	8	6	78	60	479	42253	10	4	125	56	560