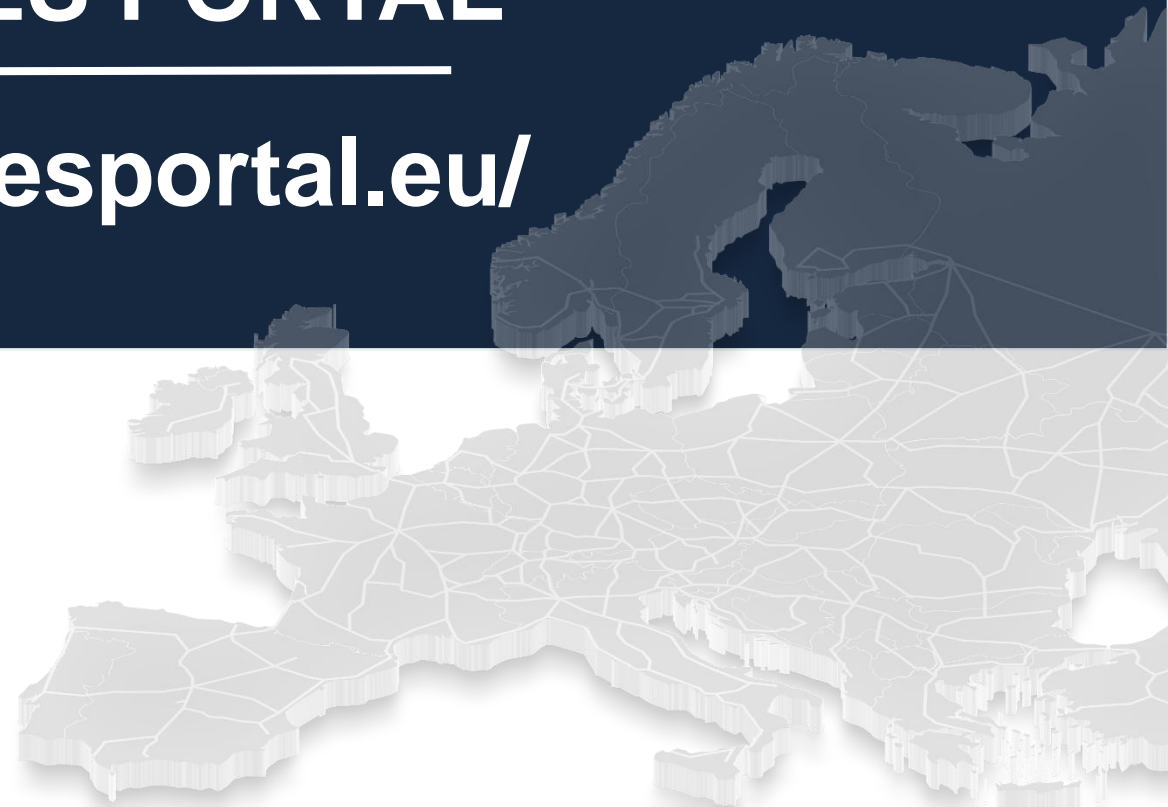




RAIL FACILITIES PORTAL

<https://railfacilitiesportal.eu/>



— RFP – Concept Based on Market and Legal Requirements

EU Legal Requirements

- Directive 2012/34 (single European railway area): publication of information about access to service facilities in the network statements
- Implementing Regulation 2017/2177 (access to service facilities): publication of mandatory service facility information by all service facility operators, as one of the options, directly in the RFP
- Regulation 913/2010 (Rail Freight Corridors): publication of list and characteristics of terminals in the Corridor Information Documents
- Regulation 1305/2014 (TAF/TAP-TSI)

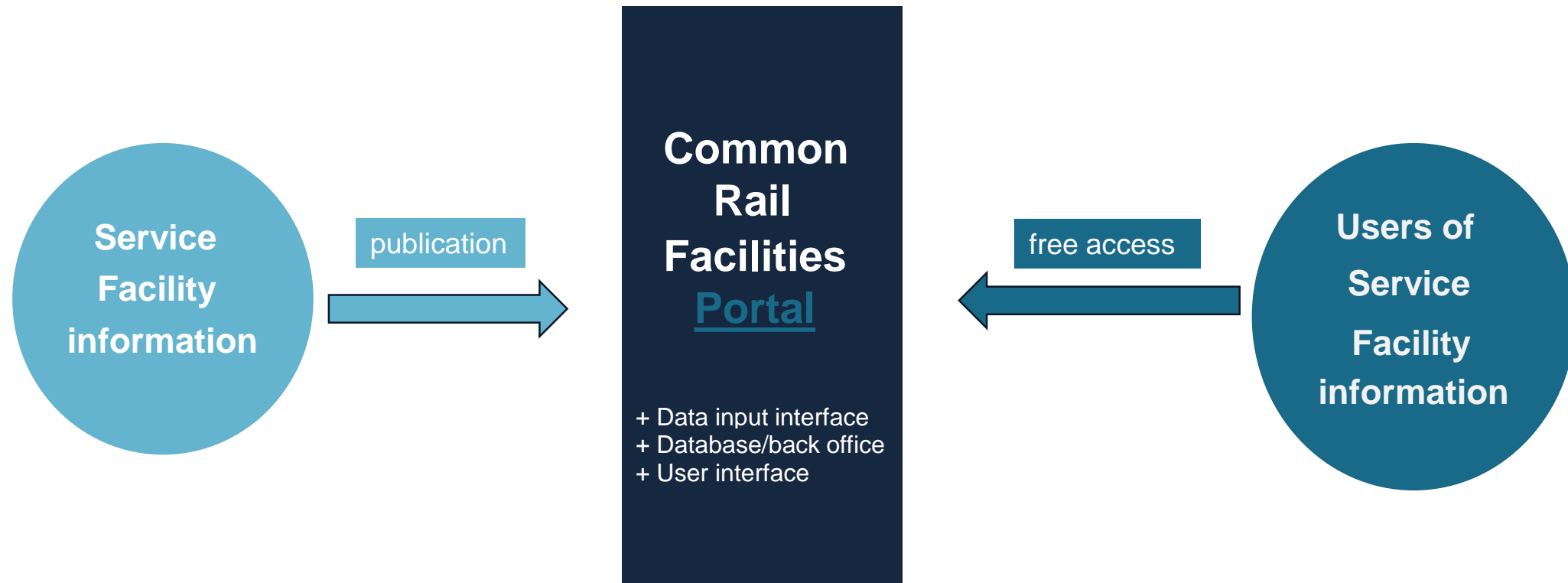
Market Requirements - Freight

- Modal shift
- Key target groups (e.g. rail freight operators)
- Information needs on access to service facilities and rail-related services therein

Market Requirements – Passenger

- Promotion of smart passenger mobility
- Key target groups (e.g. multimodal transport providers incl. rail passenger operators)
- Information needs: all multimodal interchange points, e.g. rail passenger stations

— RFP – The Single European Platform and Business Tool for Rail-Related Service Facilities

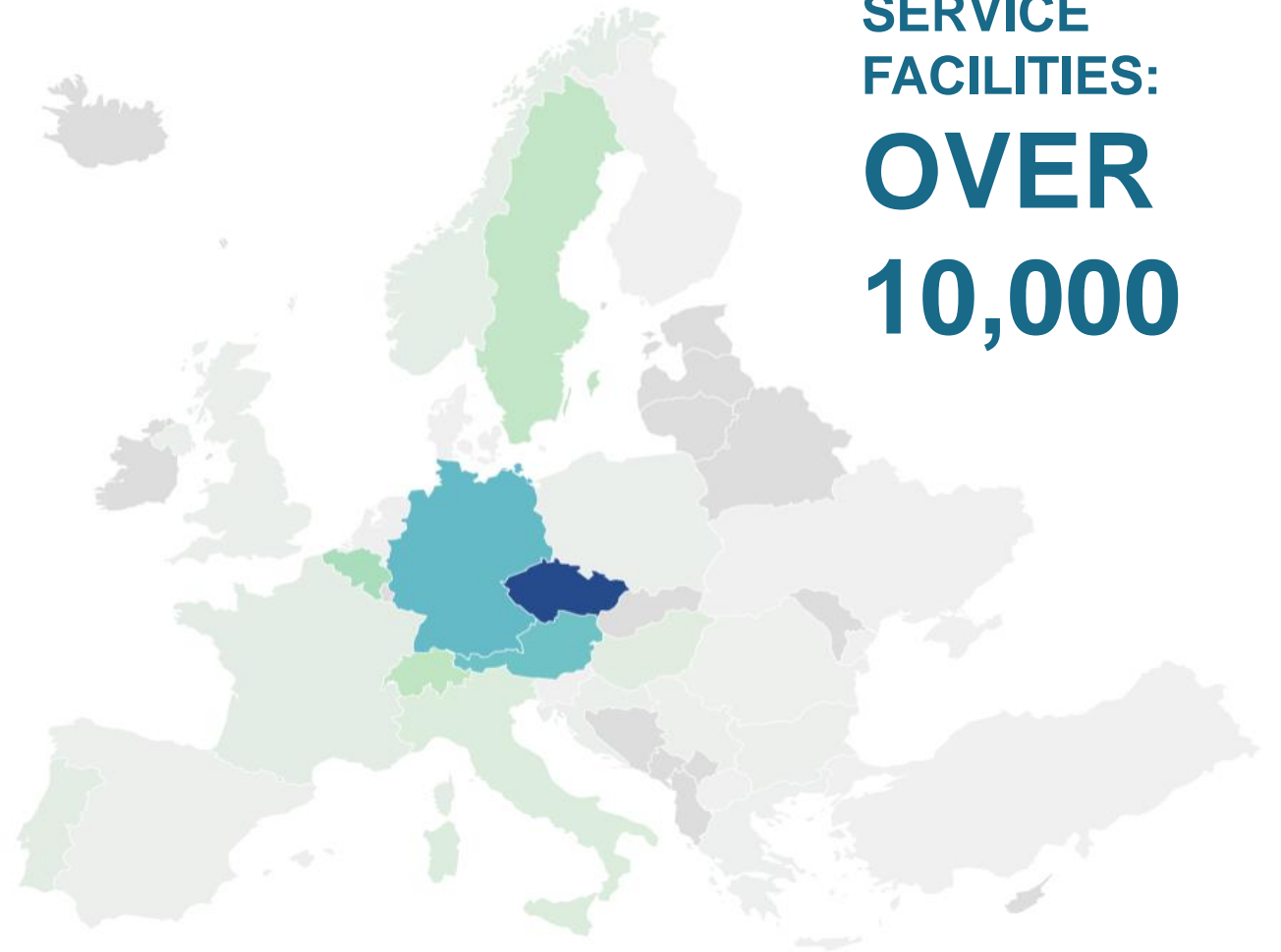


PUBLISHED ONCE = AVAILABLE FOR ALL USERS



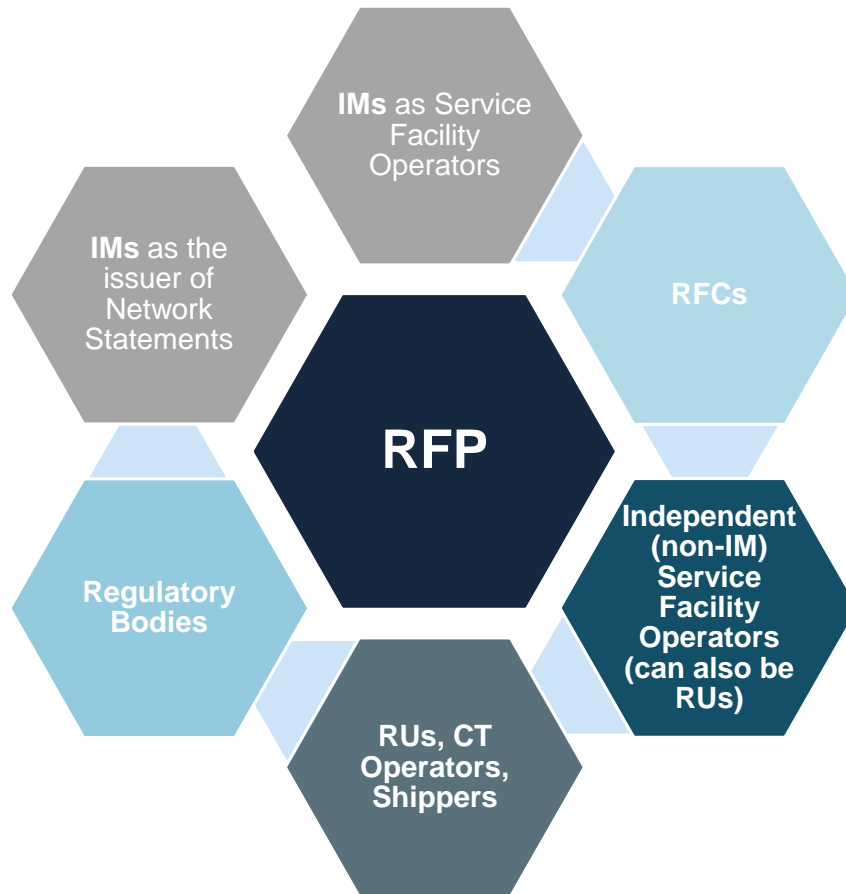
— Already used by numerous Service Facilities

- Top 10 Countries**
1. Czech Republic
 2. Germany
 3. Austria
 4. Belgium
 5. Switzerland
 6. Sweden
 7. Italy
 8. Hungary
 9. Portugal
 10. France



**TOTAL NUMBER OF
PARTICIPATING
SERVICE
FACILITIES:
OVER
10,000**

— RFP – Multitude of Involved Stakeholders



Numerous stakeholders:

- **Feeding the RFP** ('data providers'): present their facilities and services and fulfil legal obligations
- **Using the information** ('data users'): to facilitate efficient planning of transport and logistics chains for freight operators, as well as assist efficient enforcement (for RBs)



— Already highly supported by some important sector stakeholders

"I would like to invite all rail transport stakeholders to use the Portal and to explore its functionalities. "



"IRG-Rail welcomes the initiative of a common portal for rail facilities."



"Digitalisation of SF information is an important step to ensure further simplification and efficiency."





— RFP – Benefits 1/2

- **For all Service Facility Operators**

- **Promotion tool** of services, even for planned new facilities and new services
- **Cheaper and more effective** than alternative solutions: creating an own website, creating/using local/regional portals
- **Compliance tool** ensuring completeness of legally mandatory information
- **Standardized** structure ensuring not only compliance but also reflecting **market needs** of customers

- **For Infrastructure Managers**

- **Convenient, standardized data input** for all large-scale facility managers
- **Full digitalization** of the content of the section including service facility information in the network statements
- Creating a single European platform for service facility information can **further promote the international cooperation** between infrastructure managers towards a single European railway area



— RFP – Benefits 2/2

- **For Railway Undertakings and CT operators**
 - **Easily accessible, digitalized and standardized source of information supporting the planning of their services**
 - **Full range** of all commercial and technical access information to service facilities
 - **More user-friendly and more efficient than** searching in various other portals and documents
 - Data/information quality management ensuring **reliability**
- **For Rail Freight Corridors**
 - Contributing to the **achievement of RFCs' objectives**
 - Tool **facilitating** the legally mandatory provision of **terminal information**
- **For Regulatory Bodies**
 - **Added transparency** to help create an effective marketplace
 - Convenient tool supporting **monitoring and enforcement of legal obligations**

— RFP – Main Functionalities

1 MAIN MENU

2 ACTION PANEL

- Find Facilities
 - Search
 - Filter
- Select a filter to find facilities.
- Facility type
- Area type
- Services
- Postal code search
- Location on Rail Freight Corridor
- Facility operation status
- Facility opening days
- Equipment
- Public accessibility
- Infrastructure access
- Loading unit acceptance
- Cargo type
- Available capacity
- Show advanced filters

3 FACILITY MAP

- Display of search / filter results
- Navigation tools
- Different background maps/layers

4 FACILITY LIST

- Display of search / filter results
- Synchronised with FACILITY MAP

5 LEGEND

- Facility symbols
- Background maps

Functionalities including
publishing, editing and searching service facility information

Includes all types of rail service facilities (SF)
according to Directive 2012/34 (EU)

Serves different purposes and user groups

- Managing/Publishing SF information (both IM and non-IM)
- Easy access to SF information (RUs, other rail transport operators)

Compliant with EU legislation
Directive 2012/34 (EU), Reg. 2017/2177, Reg. 913/2010

Funded by the European Commission



— RFP – Facility Details – Under Full Resp. of SF Operator

Terminal Intermodal Dudelange **SF NAME** EDIT SEND FEEDBACK CLOSE

GENERAL INFORMATION SERVICES SF DESCRIPTION CHARGES ACCESS CONDITIONS CAPACITY ALLOCATION LINKS AND DOCUMENTS **STRUCTURE OF SF INFORMATION**

Introduction

Facility name: Terminal Intermodal Dudelange

Facility type: Intermodal terminal

Facility/operator exempted according Reg. (EU) 2017/2177, Art. 2: No

Purpose of this SF description: [Download document](#)

Facility located in: Seaport: -
Inland port: Yes
Freight village: Yes

DATA FIELDS

Presentation of the Service Facility: [Download document](#)

Link where additional documents are published: [Download document](#)

Service facility operator and owner

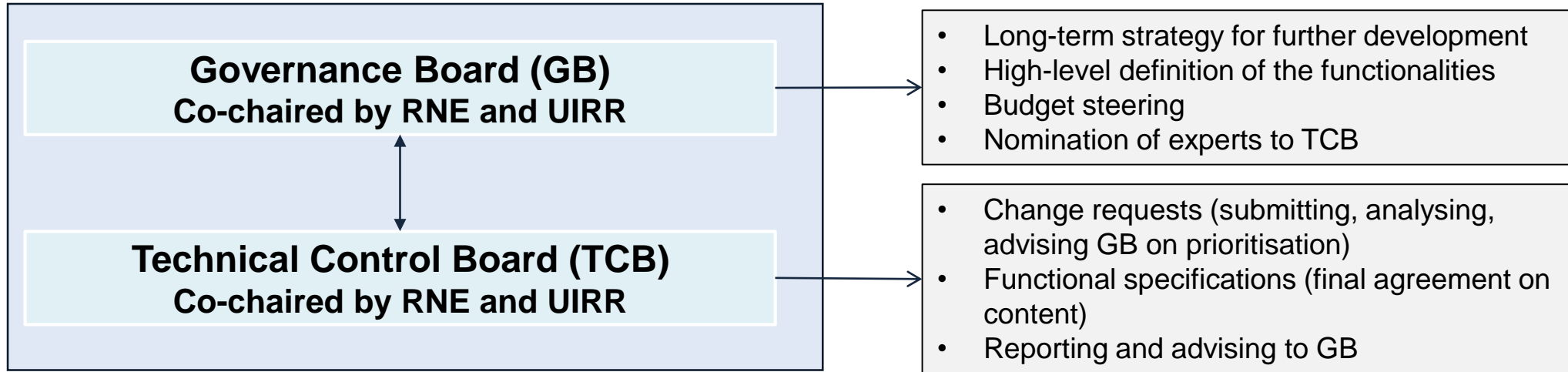
Facility operator: CFL Terminals s.a.

UIC company code (RIGS): 3759

Operator type: Integrated company

DATA AS PROVIDED BY THE SERVICE FACILITY OPERATOR


— RFP – Governance Structure




— RFP – Portal Management Structure

 Co-financed by the Connecting Europe Facility of the European Union



 *To coordinate service facilities operated by its Members*

 *To coordinate all other service facilities*

Portal Management

System Management

- Development plan
- Hardware
- System
- Interfaces

Data Management

- Data collection
- Data quality management
- User support
- SF user training

Stakeholder Management

- Identifying, managing their needs, increasing their commitment
- GB and TCB meetings
- Reporting

Comm. and Promotion

- Communication plan
- Dissemination events
- PR materials

— RFP – Outlook and Vision

- **Additional software developments** (starting in Q1-2021)
- **Intensive promotion activities by RNE / UIRR** (continuously)
 - Focused dissemination activities per target group
 - Development of various communication channels and materials
- **Development of adequate business model**

**Increase of
(1) the number of
participating service
facilities and (2) the
number of end-users
continuously to make
the RFP a common
European business
tool for SF information**



— RFP – Portal Management Core Team



Michael Spannlang



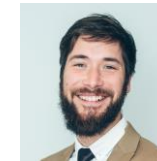
Zita Koops-Árvai



Eric Feyen



Mateusz Nowak





RFP – Main Contacts

- **Feedback Form** <https://railfacilitiesportal.eu/feedback>
- **Contact Address** contact@railfacilitiesportal.eu

