



Port of Huelva

Rolling Motorway

Huelva - Madrid –  
Zaragoza – France

# INTERMODAL STRATEGY



Electrified Railway  
Connexion

TEN-T Node

Solid Bulk Railway Unloading Pit



Logistics  
Activities  
Zone  
"ZAL"



Added-value activities

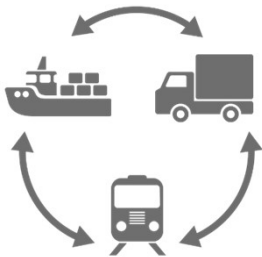
Dry Port in Sevilla

Railway  
facilities and  
connectivity

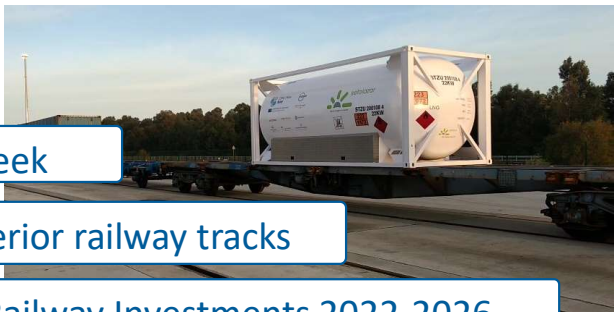
58 trains/week

40 km of interior railway tracks

+ 25 M € Railway Investments 2022-2026



"South Wharf"  
Multimodal  
Platform



14 container trains /week

## SINCROMODALITY

"Majarabique"  
Intermodal  
Railway Platform

Rolling  
Motorways  
(project in  
progress)



# INTERMODALITY TO SERVE THE MARKETS



## Excellent Rail Connections

1.840 trains in 2022

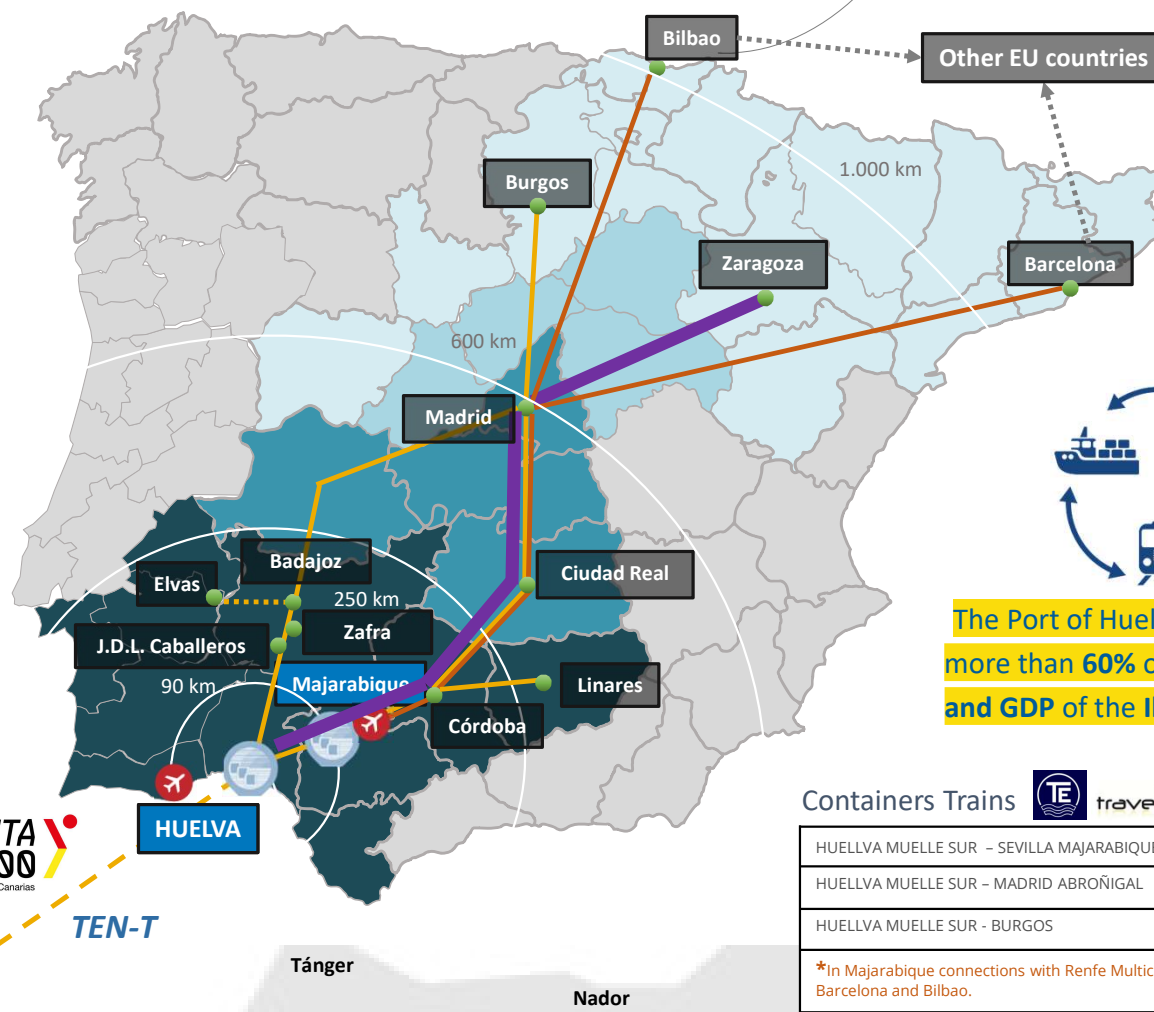
28% Container Trains

### Advanced infrastructure

- Direct access from the Spanish General Railway Network to the dockside railway terminal
- No railway junctions
- Regular bulk and container train connections
- **Rolling motorways in project (2024)**



Total Hinterland  
 PIB: 538.576 M €  
 Población: 28,1 M



The Port of Huelva has access to more than 60% of the population and GDP of the Iberian Peninsula

Containers Trains Mercancías

HUELVA MUELLE SUR - SEVILLA MAJARABIQUE*	3 TRAINS / WEEK
HUELVA MUELLE SUR - MADRID ABRONIGAL	3 TRAINS / WEEK
HUELVA MUELLE SUR - BURGOS	2 TRAINS / WEEK

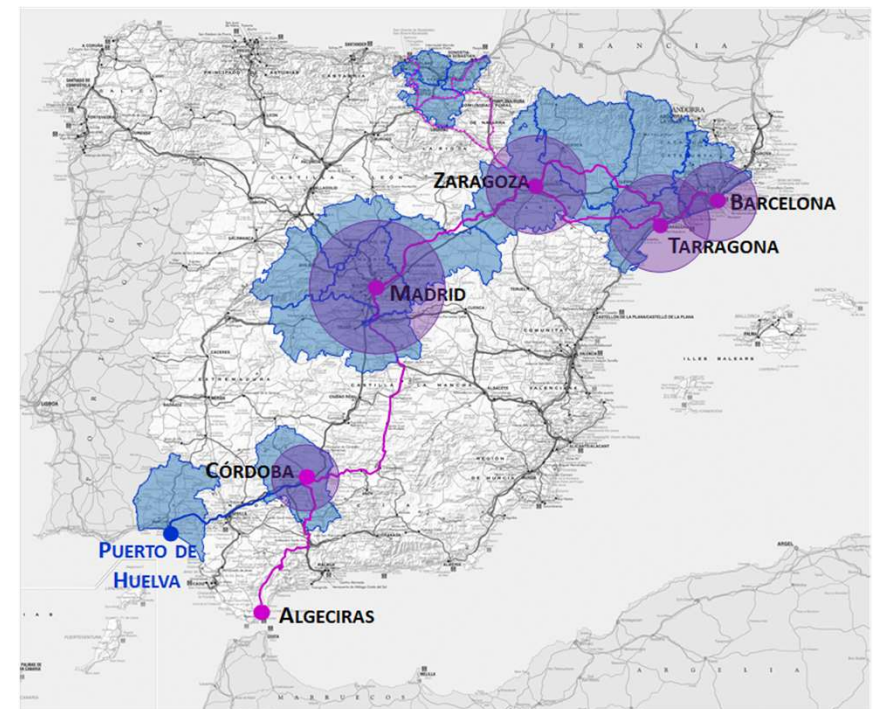
\*In Majarabique connections with Renfe Multiclientes trains towards Madrid, Barcelona and Bilbao.



## STUDY OF THE TRAFFIC POTENTIALLY SUITABLE FOR A ROLLING MOTORWAY SERVICE IN THE PORT OF HUELVA

The establishment of a rolling motorway service in the Port of Huelva is mainly justified by:

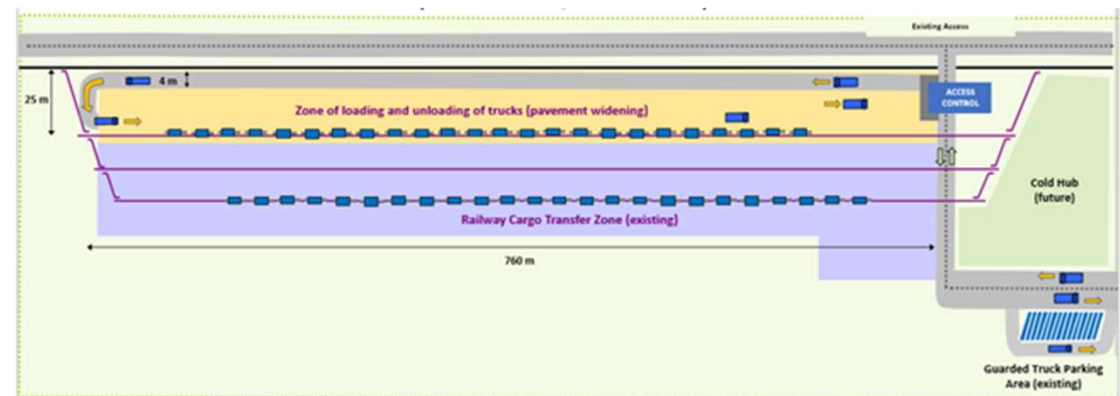
- The growth of **Ro-Ro traffic** with the Canary Islands. Over 30.000 non-accompanied semi-trailers per year.
- The region of Huelva is one of the **main exporting area** in Andalusia/Spain (Holland, Belgium, France, UK).
- **Refrigerated Cargo**. Over 1,2 MTns to EU/UK exports
- **Dry Cargo**. The Port of Huelva is the **first industrial site** in Andalusia and the second in Spain.
- In total over **300.000 semitrailers** per year from Huelva hinterland to Madrid – North Spain and EU/UK



# ROLLING MOTORWAYS. Infrastructures

## RAILWAY INFRASTRUCTURE

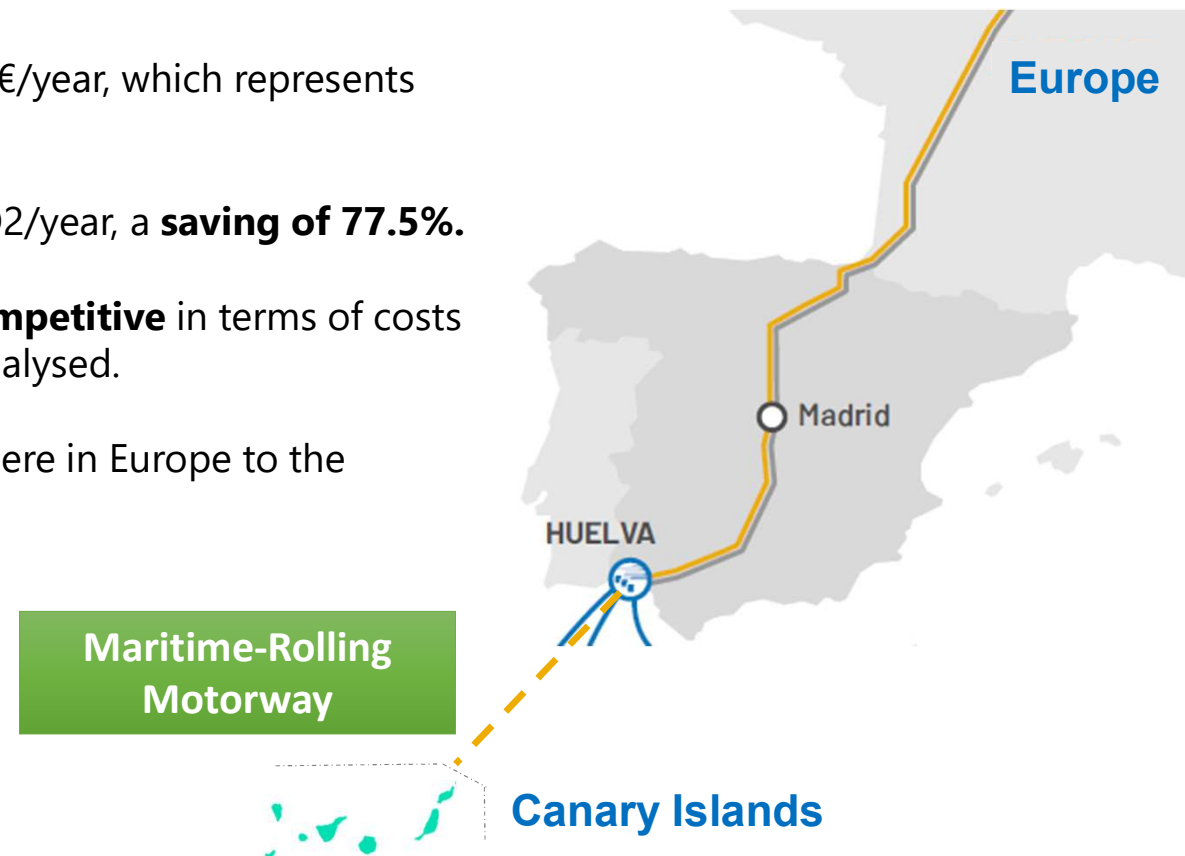
- 🌐 **Extension** of the current Railway Terminal of the Port of Huelva. → Engineering completed.
- 🌐 **Electrified traction** from Huelva to any destinations considered in the Rolling Motorway Project
- 🌐 **Resiliency** guaranteed through the comprehensive section Huelva – Zafrá – Mérida - Madrid
- 🌐 Construction of two sidings between Huelva and Seville to circulate **750 m** trains length.
  - 11 M€.
  - First one in tendering process.



# ROLLING MOTORWAYS. Advantages

## MAIN ADVANTAGES

- The **external cost savings** of up to 14.8 M €/year, which represents **86%** of the external road costs.
- Avoidance of **emissions** of up to 36 t-CO<sub>2</sub>/year, a **saving of 77.5%**.
- The Port of Huelva Rolling Motorway is **competitive** in terms of costs and timetables in almost all the services analysed.
- Allowing a semitrailer to travel from anywhere in Europe to the **Canary Islands** without a driver.





# SOUTH WHARF. Expansion actions



**Total Investment:**  
**+ 60 M €**

H-30

**MAJARABIQUE**  
Maritime extension of the Port of Huelva in the hinterland

**Current Railway Terminal for containers and swap bodies**  
750m double track  
3<sup>rd</sup> track for Rolling Motorways (project in progress: 2024)



**Future Sustainable Cool Logistics Hub (FPS)**  
35.000 m<sup>2</sup>

Capacity Fase I:  
Frozen (-25 °C): 21.000 american size pallets  
Chilled (+5 °C): 3.000 american size pallets

**Future Container Terminal**  
up to 225.000 m<sup>2</sup>  
**> 400 reefer plugs**

**Future Extension**  
75.000 m<sup>2</sup>

**Current Automatic Control Acces**

**B.C.P. available 18.000 m<sup>2</sup>**  
**Current MPP area 27.000 m<sup>2</sup>**

**Current RO-RO area 55.000 m<sup>2</sup>**  
**41 reefer plugs**

**Current Container Terminal**  
58.000 m<sup>2</sup>  
**240 reefer plugs**

**Maritime Station and offices**

**Current double RO-RO ramp**

**Future 2<sup>nd</sup> double RO-RO ramp**

**Current Berthing Line 1270 m**



In Project dredging from 13m to 15m draught low tide (1<sup>st</sup> phase) and up to 17m (2<sup>nd</sup> phase)



# SOUTH WHARF. Currently



All means of transport integrated and synchronized







Port of Huelva

Your trusted partner for Global Logistics Chains

CLIENT ORIENTED | INTERMODAL | SUSTAINABLE | DIGITAL



Thank you for your attention

[www.puertohuelva.com](http://www.puertohuelva.com)

