



Terminal Advisory Group Presentation
Álvaro Sebastian Fdz, Tech. European Affairs
for **Luis Núñez**, Head of European Affairs of the Port of Algeciras
TAG spokesman

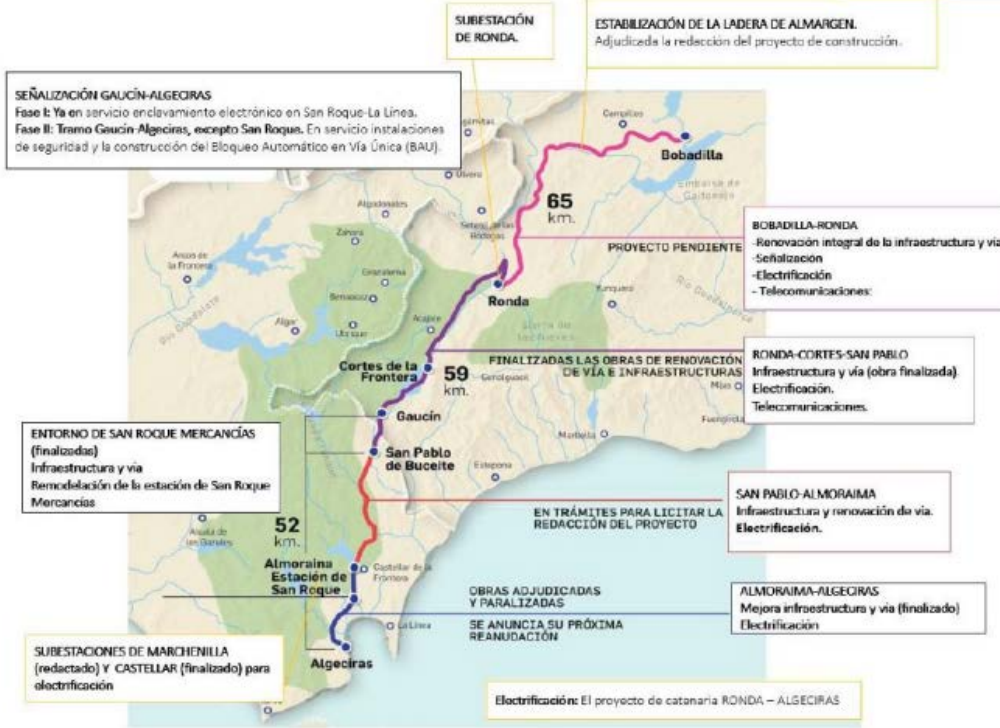


- **INFRASTRUCTURE & TRACK PROJECTS UNDER WAY**
- **RAILWAY INVESTMENT**
- **Shared Questionnaire**



Algeciras Port development, reinforces the importance of this 176-kilometer line, being part of the *Atlantic and Mediterranean European corridors*, essential in the Trans-European Transport Network.

ACTUACIONES EN LA LÍNEA ALGECIRAS-BODADILLA



- **Recent steps:**

Track renovation of a 43-kilometre section of the *Algeciras-Bobadilla* line between Ronda and Antequera.

- **The main issue:**

Environmental Impact Statement to give viability to the electrification of the track, a vital issue for the sustainability of the logistics chain demanded by our customers, and for the competitiveness of rail traffic originating in the Port of Algeciras



The plan to modernize and reinforce the railway and road connections which will determine the future of the port and the city of Algeciras pivots on three main axes:

1. **The Master Plan of the Algeciras-Bobadilla line**, which the Minister has presented today, fulfilling the commitment made by the Ministry, and which seeks to give certainty to businessmen and logistics operators.

The Plan contemplates investments for 472.7 million Euros.

2. **The promotion of the Algeciras-Zaragoza railway freeway with the execution of actions for 468 million Euros, which will allow the 1,074 kilometer freight corridor, designed for 740 meter trains, to be fully operational.**
3. The actions for the improvement of the road accesses around Algeciras, with an investment of 287 million Euros in progress.

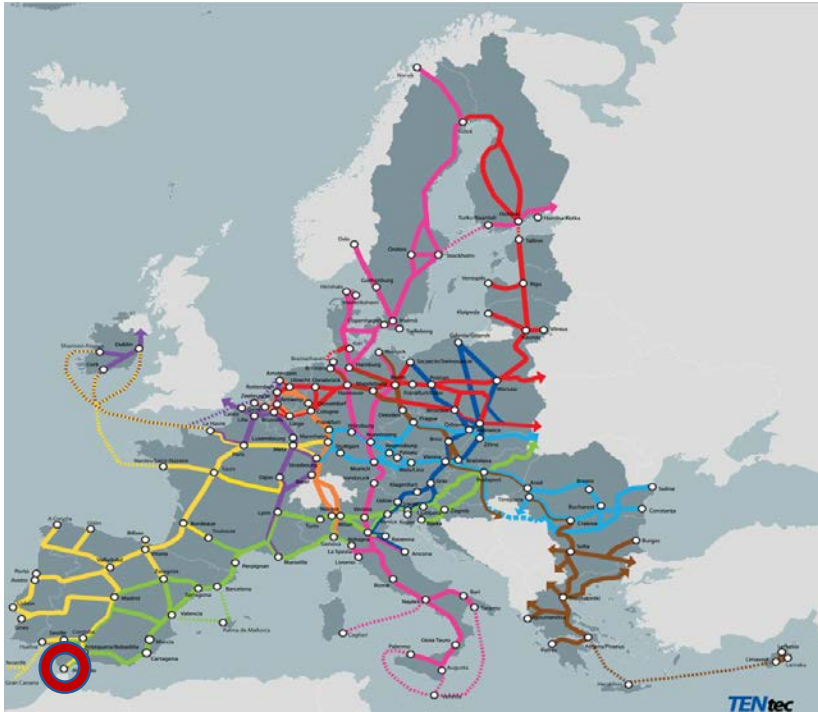


The Ministry of Transport and Sustainable Mobility is investing in improving the Bobadilla-Algeciras line and the Algeciras-Zaragoza rail motorway, while the Port of Algeciras aims to achieve ambitious goals for rail freight mobility to contribute to transport decarbonization.





ALGECIRAS PORT – RAILWAY CONNECTIVITY



PORT OF ALGECIRAS
CORE SOUTHERN GATEWAY OF ATLANTIC
AND MEDITERRANEAN EU CORRIDORS



https://ec.europa.eu/transport/themes/infrastructure_en



Increase of the goods transported by train:

+61.3%
2021/2022



The promotion of railways in the region is part of a broader strategy for sustainable development.

RAIL-PORT TERMINALS

40% bonus to T3
(port tax on goods) entering or
leaving the port by rail
IMPORT-EXPORT

T1: Container activity (3-way - 650m)
T2: Railway motorways (3 tracks - 400m)



renfe | Mercancías



TRANSFESA
Logistics

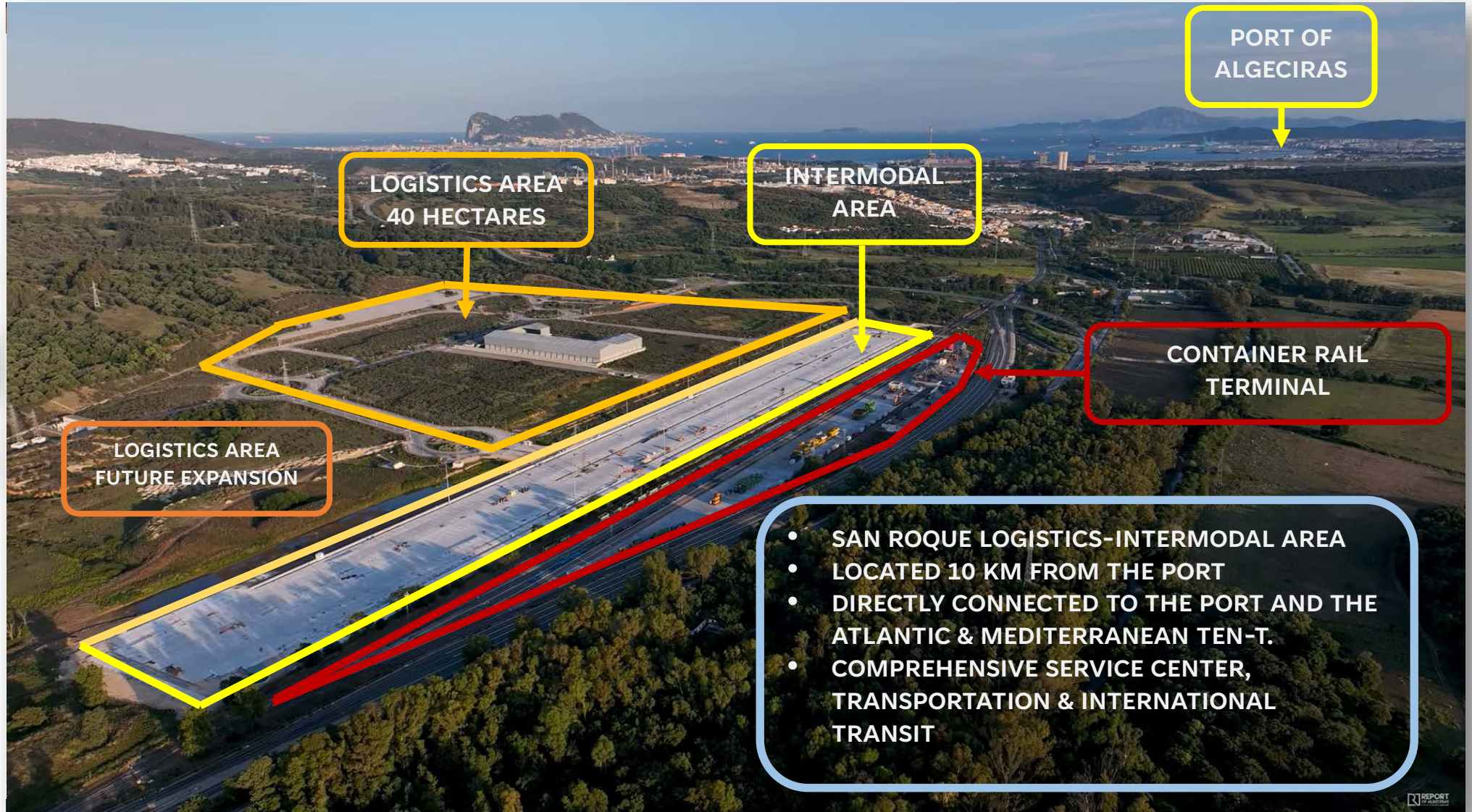
ESPAÑA
CAPTRAIN

CONTINENTAL
RAIL

SICSA
RAIL TRANSPORT

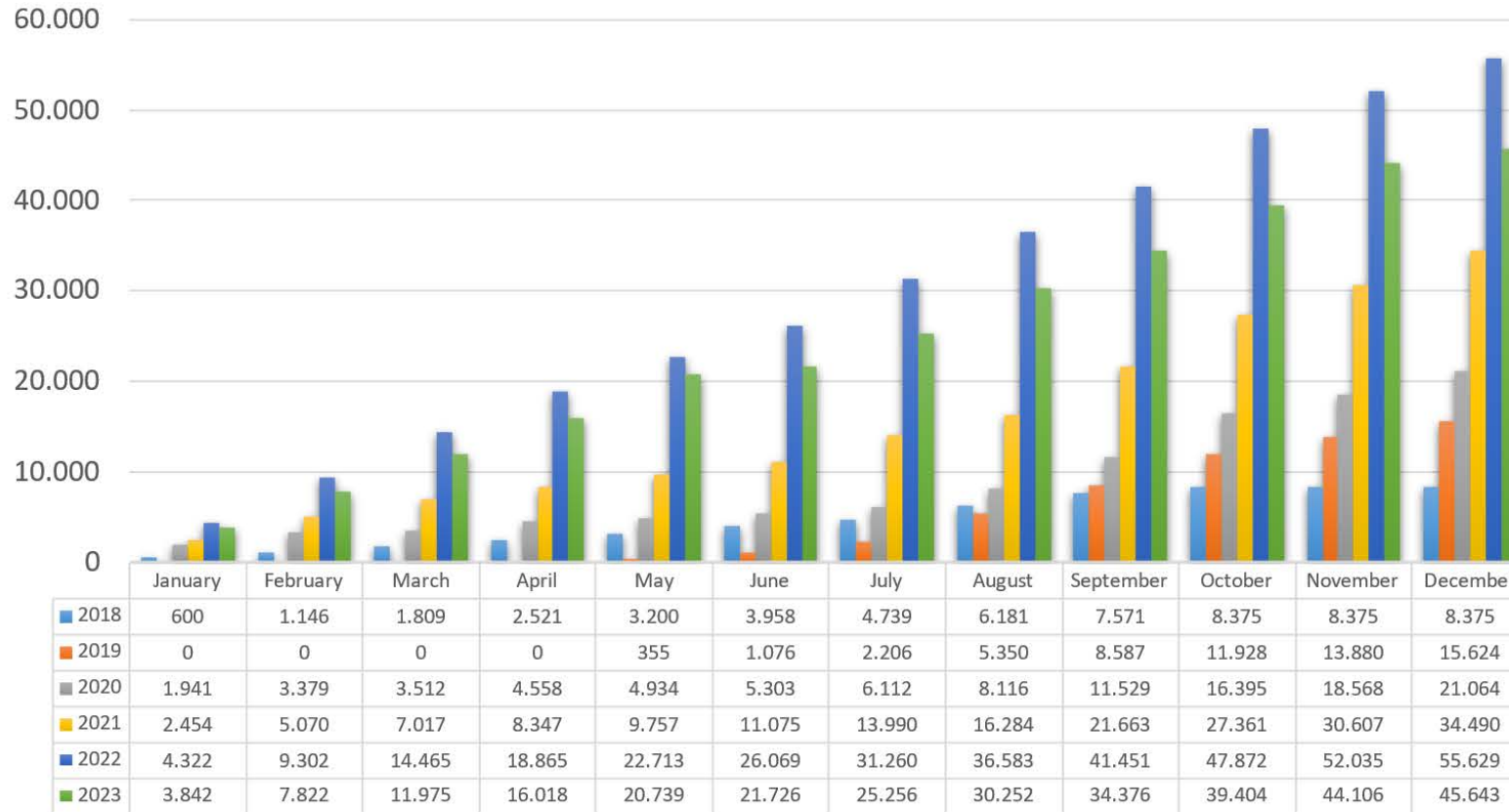


LOGISTICS AND INTERMODAL ÁREA - SAN ROQUE





RAILCARGO EVOLUTION 2018- 2023 (TEUs)



40% DISCOUNT ON PORT DUES FOR CARGO ARRIVING OR DEPARTING THE PORT BY RAIL



TEUs 2023

45,643

Trains 2023

1,163

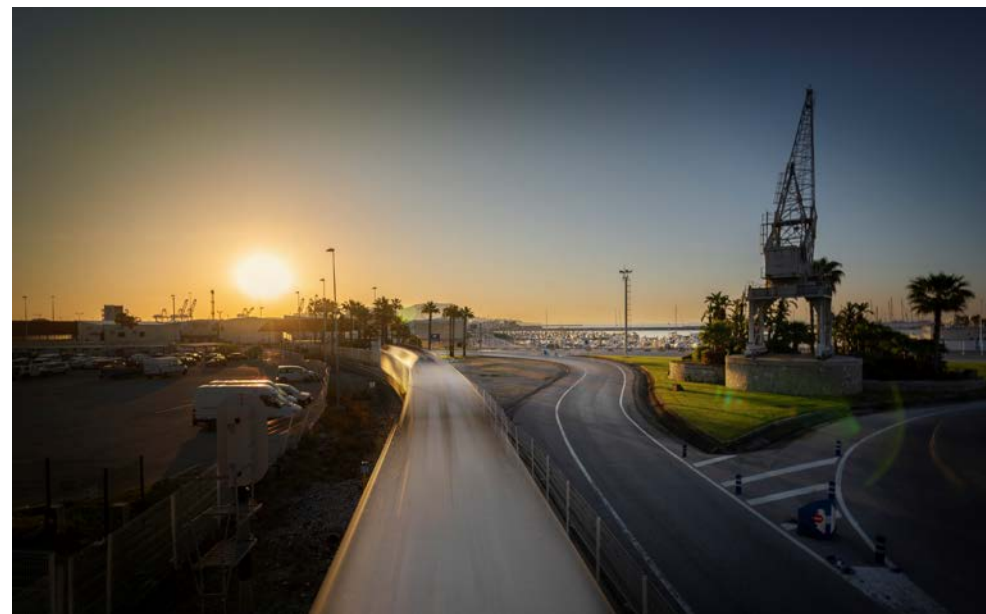
Net tons 2023

246,676

2023
Trucks withdrawn from the road
23,786



- March customer-trains connected with *Azuqueca, Coruña and Zaragoza as destination for Imports, and Azuqueca, Coruña, Marín and Zaragoza as origin for Exports.*
- The number of trucks taken off the road ACCUMULATED in the month of MARCH: 4,257 trucks (2,109 Import trucks and 2,148 Export trucks).



Update on terminals in Atlantic RFC

	PORTUGAL	SPAIN	FRANCE	GERMANY
8 PORTS	<p>2</p> <p>Port of Aveiro Port of Setubal</p>	<p>4</p> <p>Port Of Algeciras Port Of Huelva 24.313 TEUs Port of Sevilla Port of Bilbao</p>	<p>2</p> <p>Port of Le Havre Port of Strasbourg</p>	
50 INLAND TERMINALS	<p>14 operational</p> <p>VALONGO; VILA NOVA DE GAIA; PAMPILHOSA; MANGUALDE; GUARDA; ALFARELOS; ENTRONCAMENTO; TVT; BOBADELA; CONTEPARQUE; ALB; SPC; ALCONT; POCEIRÃO.</p>	<p>13 operational</p> <p>IRÚN; PASAIA, JÚNDIZ; BILBAO; NOAIN; TERCAT; VALLADOLID; ZARAGOZA; ABROÑIGAL; VICÁLVARO; COSLADA, MAJARABIQUE TEUs: 18.032 TEUs, CÓRDOBA 3 under construction Badajoz, Mérida, Navalmoral</p>	<p>10 Operational</p> <p>LE BOURGET; NOISY-LE-SEC; WOIPPY; HAUSBERGEN; VALENTON; SAINT-PIERRE-DES-CORPS; COGNAC; BORDEAUX – HOURCADE; BAYONNE – OUGUERRE; HENDAYE; AMBROGIO</p>	<p>10 Operational</p> <p>BECKINGEN PUHL; LUDWIGSHAFEN KTL; LUDWIGSHAFEN CONTARGO; MANHEIM CONTARGO; MANHEIM DP WORLD LOGISTICS; MANHEIM-HANDELSHAFEN DUSS; KIRKEL TERMINAL; GERMERSHEIM DP WORLD LOGISTICS; SAARBRUECKEN</p>



Update on terminals in Atlantic RFC – SEVILLE

RAILWAY ACTIONS

TRAINS (Nº): 1.118

TOTAL GOODS (Tns): 375,676

TOTAL NUMBER OF TEUS: 43,443

Recent or near-future railway works

New rail access 40 million by 2025

Playa de Vías 5.5 million by 2025

Aldeport Access 2.3 million 2024

Access Sevitrade 1.5 million by 2025

Free Trade Zone Siding 0.7 million 2024

Free Trade Zone Cylinder Head 0.7 million 2023

SPF 2 million extension 2025



Unifilar

ALFARELOS

12.850 Teus
20.240 units
3 reach stakers

KTL TERMINAL LUDWIGSHAFEN

342.000 units
7 Gantry cranes for 13 tracks
1 Gantry crane for dangerous goods

STRASBOURG PORT

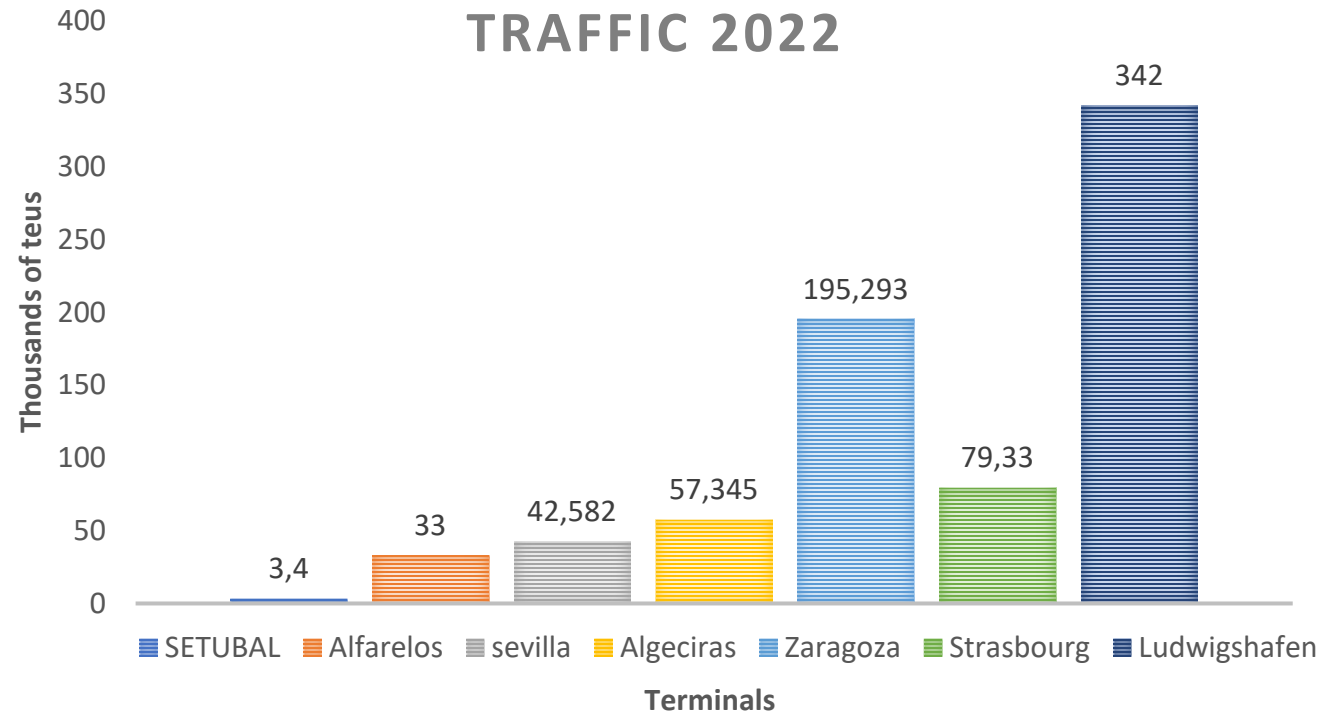
79.330 TEUS
2 trimodal gantry crane
1 bimodal gantry crane

UPDATING STATISTICS: ports and inland terminals 2022

SETUBAL

3.400 Teus
14 Cranes
2 Gantry Cranes

RAILWAY ATLANTIC TERMINALS TRAFFIC 2022



ZARAGOZA

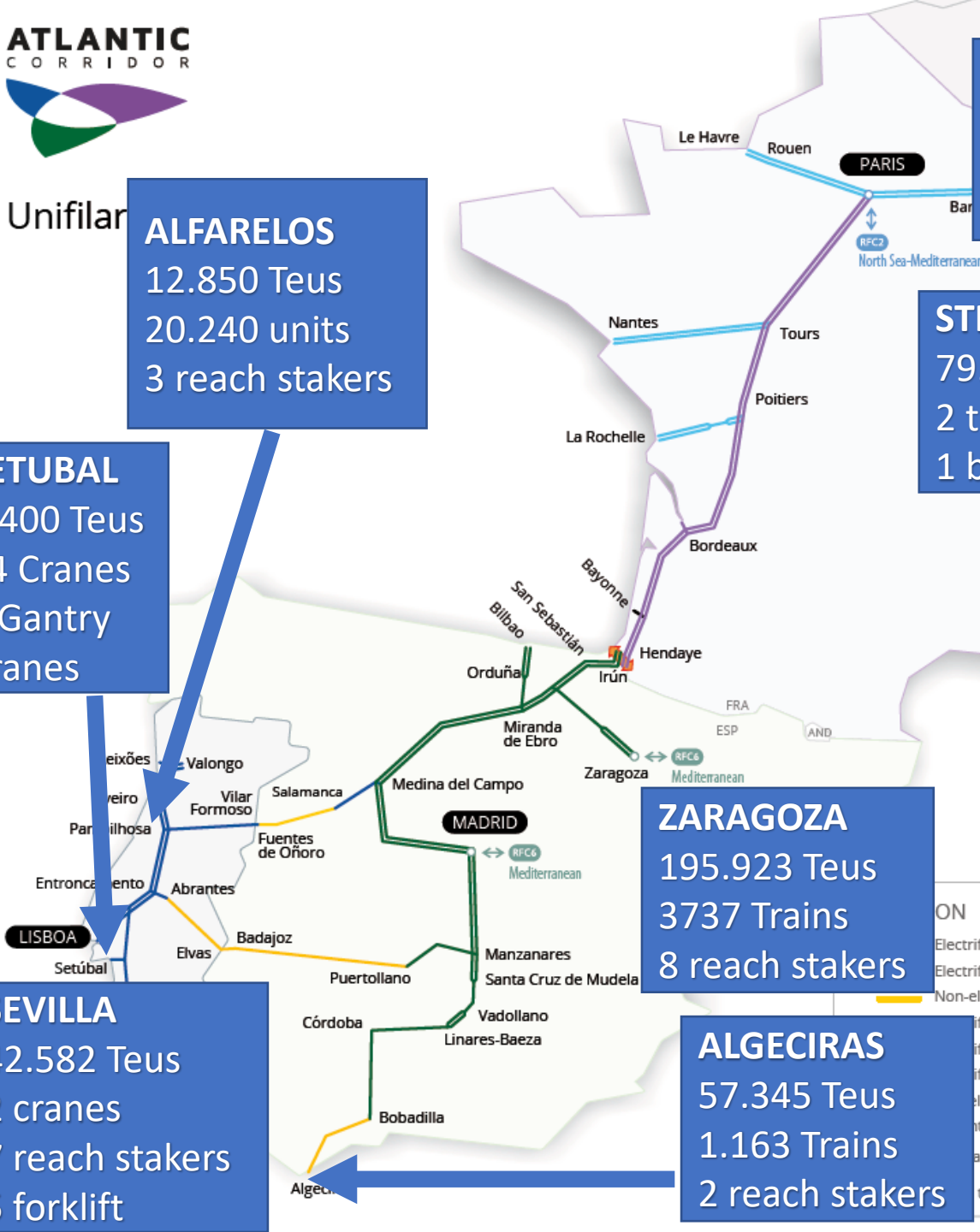
195.923 Teus
3737 Trains
8 reach stakers

SEVILLA

42.582 Teus
2 cranes
7 reach stakers
5 forklift

ALGECIRAS

57.345 Teus
1.163 Trains
2 reach stakers





- We have been working in the following questionnaire to keep any request or demand from an infrastructure and operational perspective that you may have for the EC authorities and/or railway infrastructure agencies, furthermore will be useful to update:

- *RAILWAY ATLANTIC TERMINAL TRAFFICS*
- *Update on terminals in Atlantic RFC*
- *Any update in investment in your facilities*

1. PORT:

<https://forms.office.com/e/yngSCwZxPE?origin=lprLink>

1. Inland Railway Terminals:

<https://forms.office.com/e/DuABQ9ehWh?origin=lprLink>





- **Increase of market share from private rail operators (RENFE MERCANCIAS MSC).**
- **Deploy of the Rolling Motorways.**
- **Investments from National Infrastructure Managers due to TEN-T requirements and the availability of grants.**
- **Cooperate to create a context to take steps forward in the development of this initiative.**



ATLANTIC
CORRIDOR



Thanks!

Contact:

proyectoseuropeos@apba.es

